



SITE NAME
Hamble Airfield
Southampton, Hampshire

SITE REF. SU 4708

DRILLING CONTRACTOR: Ready Mixed Concrete (UK) Ltd
EQUIPMENT AND METHOD: Power Auger

GROUND LEVEL 22.30 m AOD
CO-ORDINATES E 447817.00 N 108285.00
DATE DRILLED
START : 13/6/95
FINISH : 13/6/95

| DESCRIPTION | REDUCED LEVEL (m AOD) | LEGEND | DEPTH & THICKNESS (m) | SAMPLE DEPTH (m) & TYPE | WATER STRIKE | MONITOR INSTALLATION | |
|-------------------------------|-----------------------|--------|-----------------------|-------------------------|--------------|----------------------|------|
| Top SOIL | 22.00 | | 0.30 | | | | 0.50 |
| HOGGIN (Brown clay and stone) | | | (2.70) | | | | 1.00 |
| Yellow soft CLAY | 19.30 | | 3.00 | | | | 4.00 |
| | | | (1.50) | | | | 4.40 |
| Blue firm CLAY | 17.80 | | 4.50 | | | | |
| | | | (1.50) | | | | |
| | 16.30 | | 6.00 | | | | 6.00 |

| | |
|----------------------------|--|
| KEY | |
| B - Bulk disturbed sample | |
| D - Small disturbed sample | |
| U - Undisturbed sample | |
| W - Water sample | |
| X - Cuttings sample | |
| c - Coarse grained | |
| m - Medium grained | |
| f - Fine grained | |

NOTES

MONITORING POINT ELEVATION & ID
 Ref. Elev. mAOD

TOTAL DEPTH
 6.00
METRES

LOGGED BY
 WKJ Osborn

DATE LOGGED
 13/06/1995

SCALE
 1 : 100



SITE NAME
Hamble Airfield
Southampton, Hampshire

SITE REF. SU 4708

DRILLING CONTRACTOR: Ready Mixed Concrete (UK) Ltd
EQUIPMENT AND METHOD: Power Auger

GROUND LEVEL 21.10 m AOD
CO-ORDINATES E 447817.00 N 108095.00
DATE DRILLED
START : 13/6/95
FINISH : 13/6/95

| DESCRIPTION | REDUCED LEVEL (m AOD) | LEGEND | DEPTH & THICKNESS (m) | SAMPLE DEPTH (m) & TYPE | WATER STRIKE | MONITOR INSTALLATION |
|------------------|-----------------------|--------|------------------------|-------------------------|--------------|----------------------|
| TOP SOIL | 20.50 | | (0.60) 0.60 | | | |
| HOGGIN | | | (1.60) | | | |
| Yellow find SAND | 18.90 | | 2.20 (2.30) | | | |
| Yellow CLAY | 16.60 | | 4.50 (0.50) 9.00 | | | |

| | |
|----------------------------|--------------------|
| KEY | |
| B - Bulk disturbed sample | - Water strike 1 |
| D - Small disturbed sample | - Standing water 1 |
| U - Undisturbed sample | - Water strike 2 |
| W - Water sample | - Standing water 2 |
| X - Cuttings sample | |
| c - Coarse grained | |
| m - Medium grained | |
| f - Fine grained | |

NOTES

MONITORING POINT ELEVATION & ID
 Ref. Elev. mAOD

TOTAL DEPTH
 5.00
METRES

LOGGED BY
 WKJ Osborn

DATE LOGGED
 13/06/1995

SCALE
 1 : 100



SITE NAME
Hamble Airfield
Southampton, Hampshire

SITE REF. SU 4708

DRILLING CONTRACTOR: Ready Mixed Concrete (UK) Ltd
EQUIPMENT AND METHOD: Power Auger

GROUND LEVEL 20.90 m AOD
CO-ORDINATES E 447809.00 N 107898.00
DATE DRILLED
START : 13/6/95
FINISH : 13/6/95

| DESCRIPTION | REDUCED LEVEL (m AOD) | LEGEND | DEPTH & THICKNESS (m) | SAMPLE DEPTH (m) & TYPE | WATER STRIKE | MONITOR INSTALLATION |
|-----------------------|-----------------------|--------|-----------------------|-------------------------|--------------|----------------------|
| TOP SOIL | 20.30 | | (0.60) 0.60 | | | |
| Brown sandy soft CLAY | | | (1.40) | | | |
| HOGGIN | 18.90 | | 2.00 | | | |
| Yellow fine SAND | 17.90 | | (1.00) 3.00 | | | |
| Brown sandy GRAVEL | 17.40 | | (0.50) 3.50 | | | |
| | | | (3.30) | | ↓ 6.00 | |
| Yellow CLAY | 13.90 | | 7.00 | | | |
| | 13.40 | | (0.50) 7.50 | | | |

KEY

| | |
|----------------------------|----------------------|
| B - Bulk disturbed sample | ↓ - Water strike 1 |
| D - Small disturbed sample | ↓ - Standing water 1 |
| U - Undisturbed sample | ↓ - Water strike 2 |
| W - Water sample | ↓ - Standing water 2 |
| X - Cuttings sample | |
| c - Coarse grained | |
| m - Medium grained | |
| f - Fine grained | |

NOTES

MONITORING POINT ELEVATION & ID
 Ref. Elev. mAOD

TOTAL DEPTH
 7.50
METRES

LOGGED BY
 WKJ Osborn

DATE LOGGED
 13/06/1995

SCALE
 1 : 100



SITE NAME
Hamble Airfield
Southampton, Hampshire

SITE REF. SU 4708

DRILLING CONTRACTOR: Ready Mixed Concrete (UK) Ltd
EQUIPMENT AND METHOD: Power Auger

GROUND LEVEL
 21.20 m AOD

CO-ORDINATES
 E 447807.00 N 107695.00

DATE DRILLED
START : 13/6/95
FINISH : 13/6/95

| DESCRIPTION | REDUCED LEVEL (m AOD) | LEGEND | DEPTH & THICKNESS (m) | SAMPLE DEPTH (m) & TYPE | WATER STRIKE | MONITOR INSTALLATION |
|--------------------|-----------------------|--------|-----------------------|-------------------------|--------------|----------------------|
| TOP SOIL | 20.60 | | (0.60) 0.60 | | | |
| Brown soft CLAY | | | (1.60) | | | |
| HOGGIN | 19.00 | | 2.20 | | | |
| | | | (2.80) | | | |
| Brown sandy GRAVEL | 16.20 | | 5.00 | | | |
| | | | (1.50) | | | |
| Yellow CLAY | 14.70 | | 6.50 | | ↓ 6.80 | |
| | | | (1.00) | | | |
| | 13.70 | | 7.50 | | | |

| | |
|----------------------------|----------------------|
| KEY | |
| B - Bulk disturbed sample | ↓ - Water strike 1 |
| D - Small disturbed sample | ↓ - Standing water 1 |
| U - Undisturbed sample | ↓ - Water strike 2 |
| W - Water sample | ↓ - Standing water 2 |
| X - Cuttings sample | |
| c - Coarse grained | |
| m - Medium grained | |
| f - Fine grained | |

NOTES

MONITORING POINT ELEVATION & ID
 Ref. Elev. mAOD

TOTAL DEPTH
 7.00
METRES

LOGGED BY
 WKJ Osborn

DATE LOGGED
 13/06/1995

SCALE
 1 : 100



SITE NAME
Hamble Airfield
Southampton, Hampshire

SITE REF. SU 4708

DRILLING CONTRACTOR: Ready Mixed Concrete (UK) Ltd
EQUIPMENT AND METHOD: Power Auger

GROUND LEVEL 20.90 m AOD
CO-ORDINATES E 447803.00 N 107501.00
DATE DRILLED
START : 13/6/95
FINISH : 13/6/95

| DESCRIPTION | REDUCED LEVEL (m AOD) | LEGEND | DEPTH & THICKNESS (m) | SAMPLE DEPTH (m) & TYPE | WATER STRIKE | MONITOR INSTALLATION |
|--------------------|-----------------------|--------|-----------------------|-------------------------|--------------|----------------------|
| TOP SOIL | 20.30 | | (0.60) 0.60 | | | |
| Brown soft CLAY | | | (2.40) | | | |
| HOGGIN | 17.90 | | 3.00 | | | |
| Brown sandy GRAVEL | 17.40 | | (0.50) 9.50 | | | |
| | | | (3.00) | | ↓ 5.50 | |
| Yellow CLAY | 14.40 | | 6.50 | | | |
| | | | (1.00) | | | |
| | 13.40 | | 7.50 | | | |

| | |
|----------------------------|----------------------|
| KEY | |
| B - Bulk disturbed sample | ↓ - Water strike 1 |
| D - Small disturbed sample | ↓ - Standing water 1 |
| U - Undisturbed sample | ↓ - Water strike 2 |
| W - Water sample | ↓ - Standing water 2 |
| X - Cuttings sample | |
| c - Coarse grained | |
| m - Medium grained | |
| f - Fine grained | |

NOTES

MONITORING POINT ELEVATION & ID
 Ref. Elev. mAOD

TOTAL DEPTH
 7.50
METRES

LOGGED BY
 WKJ Osborn

DATE LOGGED
 13/06/1995

SCALE
 1 : 100



SITE NAME
Hamble Airfield
Southampton, Hampshire

SITE REF. SU 4708

DRILLING CONTRACTOR: Ready Mixed Concrete (UK) Ltd
EQUIPMENT AND METHOD: Power Auger

GROUND LEVEL 20.00 m AOD
CO-ORDINATES E 447810.00 N 107324.00
DATE DRILLED
START : 13/6/95
FINISH : 13/6/95

| DESCRIPTION | REDUCED LEVEL (m AOD) | LEGEND | DEPTH & THICKNESS (m) | SAMPLE DEPTH (m) & TYPE | WATER STRIKE | MONITOR INSTALLATION |
|--------------------|-----------------------|--------|-----------------------|-------------------------|--------------|----------------------|
| TOP SOIL | 19.40 | | (0.60) 0.60 | | | |
| Brown soft CLAY | | | (1.80) | | | |
| HOGGIN | 17.60 | | 2.40 | | | |
| Brown sandy GRAVEL | 16.50 | | (1.10) 3.50 | | | |
| | | | (3.50) | | ↓ 6.00 | |
| Yellow CLAY | 13.00 | | 7.00 | | | |
| | 12.50 | | (0.50) 7.50 | | | |

| | |
|----------------------------|----------------------|
| KEY | |
| B - Bulk disturbed sample | ↓ - Water strike 1 |
| D - Small disturbed sample | ↓ - Standing water 1 |
| U - Undisturbed sample | ↓ - Water strike 2 |
| W - Water sample | ↓ - Standing water 2 |
| X - Cuttings sample | |
| c - Coarse grained | |
| m - Medium grained | |
| f - Fine grained | |

NOTES

MONITORING POINT ELEVATION & ID
 Ref. Elev. mAOD

TOTAL DEPTH
 7.50
METRES

LOGGED BY
 WKJ Osborn

DATE LOGGED
 13/06/1995

SCALE
 1 : 100



SITE NAME
Hamble Airfield
Southampton, Hampshire

SITE REF. SU 4708

DRILLING CONTRACTOR: Ready Mixed Concrete (UK) Ltd
EQUIPMENT AND METHOD: Power Auger

GROUND LEVEL 18.50 m AOD
CO-ORDINATES E 447979.00 N 107324.00
DATE DRILLED
START : 13/6/95
FINISH : 13/6/95

| DESCRIPTION | REDUCED LEVEL (m AOD) | LEGEND | DEPTH & THICKNESS (m) | SAMPLE DEPTH (m) & TYPE | WATER STRIKE | MONITOR INSTALLATION |
|-----------------|-----------------------|--------|-----------------------|-------------------------|--------------|----------------------|
| TOP SOIL | 17.90 | | (0.60) 0.60 | | | |
| Brown soft CLAY | 17.00 | | (0.90) 1.50 | | | |
| Brown HOGGIN | 14.00 | | (3.00) 4.50 | | | |
| Yellow CLAY | 13.50 | | (0.50) 9.00 | | | |

| | |
|----------------------------|--------------------|
| KEY | |
| B - Bulk disturbed sample | - Water strike 1 |
| D - Small disturbed sample | - Standing water 1 |
| U - Undisturbed sample | - Water strike 2 |
| W - Water sample | - Standing water 2 |
| X - Cuttings sample | |
| c - Coarse grained | |
| m - Medium grained | |
| f - Fine grained | |

NOTES

MONITORING POINT ELEVATION & ID
 Ref. Elev. mAOD

TOTAL DEPTH
 5.00
METRES

LOGGED BY
 WKJ Osborn

DATE LOGGED
 13/06/1995

SCALE
 1 : 100



SITE NAME
Hamble Airfield
Southampton, Hampshire

SITE REF. SU 4708

DRILLING CONTRACTOR: Ready Mixed Concrete (UK) Ltd
EQUIPMENT AND METHOD: Power Auger

GROUND LEVEL 18.90 m AOD
CO-ORDINATES E 448036.00 N 107395.00
DATE DRILLED
START : 13/6/95
FINISH : 13/6/95

| DESCRIPTION | REDUCED LEVEL (m AOD) | LEGEND | DEPTH & THICKNESS (m) | SAMPLE DEPTH (m) & TYPE | WATER STRIKE | MONITOR INSTALLATION |
|------------------|-----------------------|--------|-----------------------|-------------------------|--------------|----------------------|
| TOP SOIL | 18.30 | | (0.60) 0.60 | | | |
| HOGGIN | | | (4.40) | | | |
| Yellow fine SAND | 13.90 | | 5.00 | | | |
| Yellow CLAY | 13.40 | | (0.50) 9.50 | | | |
| | 12.90 | | (0.50) 6.00 | | | |

| | |
|----------------------------|--------------------|
| KEY | |
| B - Bulk disturbed sample | |
| D - Small disturbed sample | |
| U - Undisturbed sample | |
| W - Water sample | |
| X - Cuttings sample | |
| c - Coarse grained | |
| m - Medium grained | |
| f - Fine grained | |
| | - Water strike 1 |
| | - Standing water 1 |
| | - Water strike 2 |
| | - Standing water 2 |

NOTES

MONITORING POINT ELEVATION & ID
 Ref. Elev. mAOD

TOTAL DEPTH
 6.00
METRES

LOGGED BY
 WKJ Osborn

DATE LOGGED
 13/06/1995

SCALE
 1 : 100



SITE NAME
Hamble Airfield
Southampton, Hampshire

SITE REF. SU 4708

DRILLING CONTRACTOR: Ready Mixed Concrete (UK) Ltd
EQUIPMENT AND METHOD: Power Auger

GROUND LEVEL 19.90 m AOD
CO-ORDINATES E 447900.00 N 107401.00
DATE DRILLED
START : 13/6/95
FINISH : 13/6/95

| DESCRIPTION | REDUCED LEVEL (m AOD) | LEGEND | DEPTH & THICKNESS (m) | SAMPLE DEPTH (m) & TYPE | WATER STRIKE | MONITOR INSTALLATION |
|------------------|-----------------------|--------|-----------------------|-------------------------|--------------|----------------------|
| TOP SOIL | 19.30 | | (0.60) 0.60 | | | |
| Brown sandy CLAY | | | (1.40) | | | |
| HOGGIN | 17.90 | | 2.00 (3.00) | | | |
| Yellow CLAY | 14.90 | | 5.00 (1.00) | | | |
| | 13.90 | | 6.00 | | | |

| | | | | |
|--|--|--------------|---|-------------------------------|
| KEY B - Bulk disturbed sample D - Small disturbed sample U - Undisturbed sample W - Water sample X - Cuttings sample c - Coarse grained m - Medium grained f - Fine grained | - Water strike 1 - Standing water 1 - Water strike 2 - Standing water 2 | NOTES | MONITORING POINT ELEVATION & ID Ref. Elev. mAOD | TOTAL DEPTH 6.00 METRES |
| | | | | LOGGED BY WKJ Osborn |
| | | | | DATE LOGGED 13/06/1995 |
| | | | | SCALE 1 : 100 |



SITE NAME
Hamble Airfield
Southampton, Hampshire

SITE REF. SU 4708

DRILLING CONTRACTOR: Ready Mixed Concrete (UK) Ltd
EQUIPMENT AND METHOD: Power Auger

GROUND LEVEL 20.20 m AOD
CO-ORDINATES E 447889.00 N 107614.00
DATE DRILLED
START : 13/6/95
FINISH : 13/6/95

| DESCRIPTION | REDUCED LEVEL (m AOD) | LEGEND | DEPTH & THICKNESS (m) | SAMPLE DEPTH (m) & TYPE | WATER STRIKE | MONITOR INSTALLATION |
|-----------------------|-----------------------|--------|-----------------------|-------------------------|--------------|----------------------|
| TOP SOIL | 19.60 | | (0.60) 0.60 | | | |
| Brown sandy CLAY | 18.70 | | (0.90) 1.50 | | | |
| HOGGIN | 15.70 | | (3.00) | | | |
| Grey fine clayey SAND | 14.20 | | (1.50) 6.00 | | | |

| | |
|----------------------------|--------------------|
| KEY | |
| B - Bulk disturbed sample | - Water strike 1 |
| D - Small disturbed sample | - Standing water 1 |
| U - Undisturbed sample | - Water strike 2 |
| W - Water sample | - Standing water 2 |
| X - Cuttings sample | |
| c - Coarse grained | |
| m - Medium grained | |
| f - Fine grained | |

NOTES

MONITORING POINT ELEVATION & ID
 Ref. Elev. mAOD

TOTAL DEPTH
 6.00
METRES

LOGGED BY
 WKJ Osborn

DATE LOGGED
 13/06/1995

SCALE
 1 : 100



SITE NAME
Hamble Airfield
Southampton, Hampshire

SITE REF. SU 4708

DRILLING CONTRACTOR: Ready Mixed Concrete (UK) Ltd
EQUIPMENT AND METHOD: Power Auger

GROUND LEVEL 18.80 m AOD
CO-ORDINATES E 447993.00 N 107505.00
DATE DRILLED
START : 13/6/95
FINISH : 13/6/95

| DESCRIPTION | REDUCED LEVEL (m AOD) | LEGEND | DEPTH & THICKNESS (m) | SAMPLE DEPTH (m) & TYPE | WATER STRIKE | MONITOR INSTALLATION |
|------------------|-----------------------|--------|-----------------------|-------------------------|--------------|----------------------|
| TOP SOIL | 18.20 | | (0.60) 0.60 | | | |
| Brown sandy CLAY | 17.30 | | (0.90) 1.50 | | | |
| HOGGIN | 14.30 | | (3.00) | | | |
| Yellow fine SAND | 12.80 | | (1.50) 6.00 | | | |

KEY

B - Bulk disturbed sample
D - Small disturbed sample
U - Undisturbed sample
W - Water sample
X - Cuttings sample
c - Coarse grained
m - Medium grained
f - Fine grained

- Water strike 1
 - Standing water 1
 - Water strike 2
 - Standing water 2

NOTES

MONITORING POINT ELEVATION & ID
Ref. Elev. mAOD

TOTAL DEPTH
6.00
METRES

LOGGED BY
WKJ Osborn

DATE LOGGED
13/06/1995

SCALE
1 : 100



SITE NAME
Hamble Airfield
Southampton, Hampshire

SITE REF. SU 4708

DRILLING CONTRACTOR: Ready Mixed Concrete (UK) Ltd
EQUIPMENT AND METHOD: Power Auger

GROUND LEVEL 18.10 m AOD
CO-ORDINATES E 448001.00 N 107700.00
DATE DRILLED
START : 13/6/95
FINISH : 13/6/95

| DESCRIPTION | REDUCED LEVEL (m AOD) | LEGEND | DEPTH & THICKNESS (m) | SAMPLE DEPTH (m) & TYPE | WATER STRIKE | MONITOR INSTALLATION |
|------------------|-----------------------|--------|-----------------------|-------------------------|--------------|----------------------|
| TOP SOIL | 17.50 | | (0.60) 0.60 | | | |
| Brown sandy CLAY | 16.90 | | (0.60) 1.20 | | | |
| HOGGIN | 14.60 | | (2.30) 3.50 | | | |
| Yellow fine SAND | 12.10 | | (2.50) 6.00 | | ↓ 4.50 | |

KEY

| | | |
|----------------------------|--|--------------------|
| B - Bulk disturbed sample | | - Water strike 1 |
| D - Small disturbed sample | | - Standing water 1 |
| U - Undisturbed sample | | - Water strike 2 |
| W - Water sample | | - Standing water 2 |
| X - Cuttings sample | | |
| c - Coarse grained | | |
| m - Medium grained | | |
| f - Fine grained | | |

NOTES

MONITORING POINT ELEVATION & ID
 Ref. Elev. mAOD

TOTAL DEPTH
 6.00
METRES

LOGGED BY
 WKJ Osborn

DATE LOGGED
 13/06/1995

SCALE
 1 : 100



SITE NAME
Hamble Airfield
Southampton, Hampshire

SITE REF. SU 4708

DRILLING CONTRACTOR: Ready Mixed Concrete (UK) Ltd
EQUIPMENT AND METHOD: Power Auger

GROUND LEVEL 20.00 m AOD
CO-ORDINATES E 447909.00 N 107794.00
DATE DRILLED
START : 14/6/95
FINISH : 14/6/95

| DESCRIPTION | REDUCED LEVEL (m AOD) | LEGEND | DEPTH & THICKNESS (m) | SAMPLE DEPTH (m) & TYPE | WATER STRIKE | MONITOR INSTALLATION |
|------------------|-----------------------|--------|-----------------------|-------------------------|--------------|----------------------|
| TOP SOIL | 19.40 | | (0.60) 0.60 | | | |
| Soft sandy CLAY | 18.80 | | (0.60) 1.20 | | | |
| HOGGIN | | | (2.30) | | | |
| Yellow fine SAND | 16.50 | | 3.50 | | | |
| | 16.00 | | (0.50) 4.00 | | | |

KEY

B - Bulk disturbed sample
D - Small disturbed sample
U - Undisturbed sample
W - Water sample
X - Cuttings sample
c - Coarse grained
m - Medium grained
f - Fine grained

- Water strike 1
 - Standing water 1
 - Water strike 2
 - Standing water 2

NOTES

MONITORING POINT ELEVATION & ID
Ref. Elev. mAOD

TOTAL DEPTH
4.00
METRES

LOGGED BY
WKJ Osborn

DATE LOGGED
14/06/1995

SCALE
1 : 100



SITE NAME
Hamble Airfield
Southampton, Hampshire

SITE REF. SU 4708

DRILLING CONTRACTOR: Ready Mixed Concrete (UK) Ltd
EQUIPMENT AND METHOD: Power Auger

GROUND LEVEL 19.60 m AOD
CO-ORDINATES E 447915.00 N 107893.00
DATE DRILLED
START : 14/6/95
FINISH : 14/6/95

| DESCRIPTION | REDUCED LEVEL (m AOD) | LEGEND | DEPTH & THICKNESS (m) | SAMPLE DEPTH (m) & TYPE | WATER STRIKE | MONITOR INSTALLATION |
|------------------|-----------------------|--------|-----------------------|-------------------------|--------------|----------------------|
| TOP SOIL | 19.30 | | 0.30 | | | |
| HOGGIN | | | (2.20) | | | |
| Blue sandy CLAY | 17.10 | | 2.50 | | | |
| Yellow fine SAND | 16.60 | | (0.50) 3.00 | | | |
| | | | (3.00) | | | |
| | 13.60 | | 6.00 | | | |

KEY

| | | |
|----------------------------|--|--------------------|
| B - Bulk disturbed sample | | - Water strike 1 |
| D - Small disturbed sample | | - Standing water 1 |
| U - Undisturbed sample | | - Water strike 2 |
| W - Water sample | | - Standing water 2 |
| X - Cuttings sample | | |
| c - Coarse grained | | |
| m - Medium grained | | |
| f - Fine grained | | |

NOTES

MONITORING POINT ELEVATION & ID
 Ref. Elev. mAOD

TOTAL DEPTH
 6.00
METRES

LOGGED BY
 WKJ Osborn

DATE LOGGED
 14/06/1995

SCALE
 1 : 100



SITE NAME
Hamble Airfield
Southampton, Hampshire

SITE REF. SU 4708

DRILLING CONTRACTOR: Ready Mixed Concrete (UK) Ltd
EQUIPMENT AND METHOD: Power Auger

GROUND LEVEL 21.20 m AOD
CO-ORDINATES E 447709.00 N 108180.00
DATE DRILLED
START : 14/6/95
FINISH : 14/6/95

| DESCRIPTION | REDUCED LEVEL (m AOD) | LEGEND | DEPTH & THICKNESS (m) | SAMPLE DEPTH (m) & TYPE | WATER STRIKE | MONITOR INSTALLATION |
|-------------------------|-----------------------|--------|-----------------------|-------------------------|--------------|----------------------|
| TOP SOIL | 20.60 | | (0.60) 0.60 | | | |
| Yellow soft CLAY | | | (1.80) | | | |
| HOGGIN | 18.80 | | 2.40 (1.50) | | | |
| Yellow fine clayey SAND | 17.30 | | 3.90 (1.10) | | | |
| | 16.20 | | 5.00 | | | |

KEY

B - Bulk disturbed sample
D - Small disturbed sample
U - Undisturbed sample
W - Water sample
X - Cuttings sample
c - Coarse grained
m - Medium grained
f - Fine grained

- Water strike 1
 - Standing water 1
 - Water strike 2
 - Standing water 2

NOTES

MONITORING POINT ELEVATION & ID
Ref. Elev. mAOD

TOTAL DEPTH
5.00
METRES

LOGGED BY
WKJ Osborn

DATE LOGGED
14/06/1995

SCALE
1 : 100



SITE NAME
Hamble Airfield
Southampton, Hampshire

SITE REF. SU 4708

DRILLING CONTRACTOR: Ready Mixed Concrete (UK) Ltd
EQUIPMENT AND METHOD: Power Auger

GROUND LEVEL 21.70 m AOD
CO-ORDINATES E 447643.00 N 108248.00
DATE DRILLED
START : 14/6/95
FINISH : 14/6/95

| DESCRIPTION | REDUCED LEVEL (m AOD) | LEGEND | DEPTH & THICKNESS (m) | SAMPLE DEPTH (m) & TYPE | WATER STRIKE | MONITOR INSTALLATION |
|-------------------------|-----------------------|--------|-----------------------|-------------------------|--------------|----------------------|
| TOP SOIL | 21.10 | | (0.60) 0.60 | | | |
| HOGGIN | 20.20 | | (0.90) 1.50 | | | |
| Yellow fine clayey SAND | 16.70 | | (3.50) 5.00 | | | |

| | |
|----------------------------|--------------------|
| KEY | |
| B - Bulk disturbed sample | |
| D - Small disturbed sample | |
| U - Undisturbed sample | |
| W - Water sample | |
| X - Cuttings sample | |
| c - Coarse grained | |
| m - Medium grained | |
| f - Fine grained | |
| | - Water strike 1 |
| | - Standing water 1 |
| | - Water strike 2 |
| | - Standing water 2 |

NOTES

MONITORING POINT ELEVATION & ID
 Ref. Elev. mAOD

TOTAL DEPTH
 5.00
METRES

LOGGED BY
 WKJ Osborn

DATE LOGGED
 14/06/1995

SCALE
 1 : 100



SITE NAME
Hamble Airfield
Southampton, Hampshire

SITE REF. SU 4708

DRILLING CONTRACTOR: Ready Mixed Concrete (UK) Ltd
EQUIPMENT AND METHOD: Power Auger

GROUND LEVEL 19.90 m AOD
CO-ORDINATES E 447634.00 N 108128.00
DATE DRILLED
START : 14/6/95
FINISH : 14/6/95

| DESCRIPTION | REDUCED LEVEL (m AOD) | LEGEND | DEPTH & THICKNESS (m) | SAMPLE DEPTH (m) & TYPE | WATER STRIKE | MONITOR INSTALLATION |
|------------------------------------|-----------------------|--------|-----------------------|-------------------------|--------------|----------------------|
| TOP SOIL | 19.30 | | (0.60) 0.60 | | | |
| Yellow/brown softy CLAY some stone | | | (2.90) | | | |
| Dark brown damp GRAVEL | 16.40 | | 3.50 | | | |
| Yellow fine clayey SAND | 15.40 | | (1.00) 4.50 | | | |
| | | | (1.50) | | | |
| | 13.90 | | 6.00 | | | |

| | |
|----------------------------|--------------------|
| KEY | |
| B - Bulk disturbed sample | - Water strike 1 |
| D - Small disturbed sample | - Standing water 1 |
| U - Undisturbed sample | - Water strike 2 |
| W - Water sample | - Standing water 2 |
| X - Cuttings sample | |
| c - Coarse grained | |
| m - Medium grained | |
| f - Fine grained | |

NOTES

MONITORING POINT ELEVATION & ID
 Ref. Elev. mAOD

TOTAL DEPTH
 6.00
METRES

LOGGED BY
 WKJ Osborn

DATE LOGGED
 14/06/1995

SCALE
 1 : 100



SITE NAME
Hamble Airfield
Southampton, Hampshire

SITE REF. SU 4708

DRILLING CONTRACTOR: Ready Mixed Concrete (UK) Ltd
EQUIPMENT AND METHOD: Power Auger

GROUND LEVEL 19.30 m AOD
CO-ORDINATES E 447510.00 N 108128.00
DATE DRILLED
START : 14/6/95
FINISH : 14/6/95

| DESCRIPTION | REDUCED LEVEL (m AOD) | LEGEND | DEPTH & THICKNESS (m) | SAMPLE DEPTH (m) & TYPE | WATER STRIKE | MONITOR INSTALLATION |
|-------------------------|-----------------------|--------|-----------------------|-------------------------|--------------|----------------------|
| TOP SOIL | 18.70 | | (0.60) 0.60 | | | |
| HOGGIN | | | (3.40) | | | |
| Yellow fine clayey SAND | 15.30 | | 4.00 | | | |
| | | | (2.00) | | | |
| | 13.30 | | 6.00 | | | |

| | |
|----------------------------|--------------------|
| KEY | |
| B - Bulk disturbed sample | - Water strike 1 |
| D - Small disturbed sample | - Standing water 1 |
| U - Undisturbed sample | - Water strike 2 |
| W - Water sample | - Standing water 2 |
| X - Cuttings sample | |
| c - Coarse grained | |
| m - Medium grained | |
| f - Fine grained | |

NOTES

MONITORING POINT ELEVATION & ID
 Ref. Elev. mAOD

TOTAL DEPTH
 6.00
METRES

LOGGED BY
 WKJ Osborn

DATE LOGGED
 14/06/1995

SCALE
 1 : 100



SITE NAME
Hamble Airfield
Southampton, Hampshire

SITE REF. SU 4708

DRILLING CONTRACTOR: Ready Mixed Concrete (UK) Ltd
EQUIPMENT AND METHOD: Power Auger

GROUND LEVEL 20.10 m AOD
CO-ORDINATES E 447528.00 N 108019.00
DATE DRILLED
START : 14/6/95
FINISH : 14/6/95

| DESCRIPTION | REDUCED LEVEL (m AOD) | LEGEND | DEPTH & THICKNESS (m) | SAMPLE DEPTH (m) & TYPE | WATER STRIKE | MONITOR INSTALLATION |
|----------------------|-----------------------|--------|-----------------------|-------------------------|--------------|----------------------|
| TOP SOIL and SUBSOIL | 19.50 | | (0.60) 0.60 | | | |
| Yellow CLAY | 18.90 | | (0.60) 1.20 | | | |
| HOGGIN | | | (2.30) | | | |
| Brown GRAVEL | 16.60 | | 3.50 | | ↓ 3.50 | |
| | | | (2.00) | | | |
| Yellow fine SAND | 14.60 | | 5.50 | | | |
| | 14.10 | | (0.50) 6.00 | | | |

| | |
|----------------------------|----------------------|
| KEY | |
| B - Bulk disturbed sample | ↓ - Water strike 1 |
| D - Small disturbed sample | ↓ - Standing water 1 |
| U - Undisturbed sample | ↓ - Water strike 2 |
| W - Water sample | ↓ - Standing water 2 |
| X - Cuttings sample | |
| c - Coarse grained | |
| m - Medium grained | |
| f - Fine grained | |

NOTES

MONITORING POINT ELEVATION & ID
 Ref. Elev. mAOD

TOTAL DEPTH
 6.00
METRES

LOGGED BY
 WKJ Osborn

DATE LOGGED
 14/06/1995

SCALE
 1 : 100



SITE NAME
Hamble Airfield
Southampton, Hampshire

SITE REF. SU 4708

DRILLING CONTRACTOR: Ready Mixed Concrete (UK) Ltd
EQUIPMENT AND METHOD: Power Auger

GROUND LEVEL 20.70 m AOD
CO-ORDINATES E 447628.00 N 107935.00
DATE DRILLED
START : 14/6/95
FINISH : 14/6/95

| DESCRIPTION | REDUCED LEVEL (m AOD) | LEGEND | DEPTH & THICKNESS (m) | SAMPLE DEPTH (m) & TYPE | WATER STRIKE | MONITOR INSTALLATION |
|------------------------|-----------------------|--------|-----------------------|-------------------------|--------------|----------------------|
| TOP SOIL | 20.40 | | 0.30 | | | |
| Soft brown sandy CLAY | 19.80 | | (0.60) 0.90 | | | |
| HOGGIN | | | (4.60) | | | |
| Yellow green fine SAND | 15.20 | | 5.50 | | | |
| | 14.70 | | (0.50) 6.00 | | | |

| | | | | |
|--|--|--------------|---|-------------------------------|
| KEY B - Bulk disturbed sample D - Small disturbed sample U - Undisturbed sample W - Water sample X - Cuttings sample c - Coarse grained m - Medium grained f - Fine grained | - Water strike 1 - Standing water 1 - Water strike 2 - Standing water 2 | NOTES | MONITORING POINT ELEVATION & ID Ref. Elev. mAOD | TOTAL DEPTH 6.00 METRES |
| | | | | LOGGED BY WKJ Osborn |
| | | | | DATE LOGGED 14/06/1995 |
| | | | | SCALE 1 : 100 |



SITE NAME
Hamble Airfield
Southampton, Hampshire

SITE REF. SU 4708

DRILLING CONTRACTOR: Ready Mixed Concrete (UK) Ltd
EQUIPMENT AND METHOD: Power Auger

GROUND LEVEL
 20.50 m AOD

CO-ORDINATES
 E 447701.00 N 107984.00

DATE DRILLED
START : 14/6/95
FINISH : 14/6/95

| DESCRIPTION | REDUCED LEVEL (m AOD) | LEGEND | DEPTH & THICKNESS (m) | SAMPLE DEPTH (m) & TYPE | WATER STRIKE | MONITOR INSTALLATION |
|------------------------|-----------------------|--------|-----------------------|-------------------------|--------------|----------------------|
| TOP SOIL Brown CLAY | 20.20 | | 0.30 | | | |
| | | | (1.70) | | | |
| HOGGIN | 18.50 | | 2.00 | | | |
| | | | (3.50) | | | |
| Yellow green fine SAND | 15.00 | | 5.50 | | | |
| | 14.50 | | (0.50) 6.00 | | | |

| | | | | |
|--|--|--------------|---|-------------------------------|
| KEY B - Bulk disturbed sample D - Small disturbed sample U - Undisturbed sample W - Water sample X - Cuttings sample c - Coarse grained m - Medium grained f - Fine grained | - Water strike 1 - Standing water 1 - Water strike 2 - Standing water 2 | NOTES | MONITORING POINT ELEVATION & ID Ref. Elev. mAOD | TOTAL DEPTH 6.00 METRES |
| | | | | LOGGED BY WKJ Osborn |
| | | | | DATE LOGGED 14/06/1995 |
| | | | | SCALE 1 : 100 |



SITE NAME
Hamble Airfield
Southampton, Hampshire

SITE REF. SU 4708

DRILLING CONTRACTOR: Ready Mixed Concrete (UK) Ltd
EQUIPMENT AND METHOD: Power Auger

GROUND LEVEL 21.00 m AOD
CO-ORDINATES E 447617.00 N 107829.00
DATE DRILLED
START : 14/6/95
FINISH : 14/6/95

| DESCRIPTION | REDUCED LEVEL (m AOD) | LEGEND | DEPTH & THICKNESS (m) | SAMPLE DEPTH (m) & TYPE | WATER STRIKE | MONITOR INSTALLATION |
|------------------------------|-----------------------|--------|-----------------------|-------------------------|--------------|----------------------|
| TOP SOIL Brown sandy CLAY | 20.70 | | 0.30 | | | |
| | | | (1.70) | | | |
| HOGGIN | 19.00 | | 2.00 | | | |
| | | | (1.50) | | | |
| Brown sandy GRAVEL | 17.50 | | 3.50 | | | |
| | | | (2.00) | | | |
| Yellow green fine SAND | 15.50 | | 5.50 | | | |
| | 15.00 | | (0.50) 6.00 | | | |

| | |
|----------------------------|--------------------|
| KEY | |
| B - Bulk disturbed sample | - Water strike 1 |
| D - Small disturbed sample | - Standing water 1 |
| U - Undisturbed sample | - Water strike 2 |
| W - Water sample | - Standing water 2 |
| X - Cuttings sample | |
| c - Coarse grained | |
| m - Medium grained | |
| f - Fine grained | |

NOTES

MONITORING POINT ELEVATION & ID
 Ref. Elev. mAOD

TOTAL DEPTH
 6.00
METRES

LOGGED BY
 WKJ Osborn

DATE LOGGED
 14/06/1995

SCALE
 1 : 100



SITE NAME
Hamble Airfield
Southampton, Hampshire

SITE REF. SU 4708

DRILLING CONTRACTOR: Ready Mixed Concrete (UK) Ltd
EQUIPMENT AND METHOD: Power Auger

GROUND LEVEL 20.80 m AOD
CO-ORDINATES E 447619.00 N 107739.00
DATE DRILLED
START : 14/6/95
FINISH : 14/6/95

| DESCRIPTION | REDUCED LEVEL (m AOD) | LEGEND | DEPTH & THICKNESS (m) | SAMPLE DEPTH (m) & TYPE | WATER STRIKE | MONITOR INSTALLATION |
|------------------------|-----------------------|--------|-----------------------|-------------------------|--------------|----------------------|
| TOP SOIL | 20.20 | | (0.60) 0.60 | | | |
| Brown soft CLAY | | | (1.60) | | | |
| HOGGIN | 18.60 | | 2.20 | | | |
| Yellow green CLAY | 17.30 | | (1.30) 3.50 | | | |
| Brown GRAVEL | 16.80 | | (0.50) 4.00 | | | |
| | | | (2.50) | | | |
| Yellow green fine SAND | 14.30 | | 6.50 | | | |
| | 13.30 | | (1.00) 7.50 | | | |

| | | | | |
|--|--|--------------|---|-------------------------------|
| KEY B - Bulk disturbed sample D - Small disturbed sample U - Undisturbed sample W - Water sample X - Cuttings sample c - Coarse grained m - Medium grained f - Fine grained | - Water strike 1 - Standing water 1 - Water strike 2 - Standing water 2 | NOTES | MONITORING POINT ELEVATION & ID Ref. Elev. mAOD | TOTAL DEPTH 7.50 METRES |
| | | | | LOGGED BY WKJ Osborn |
| | | | | DATE LOGGED 14/06/1995 |
| | | | | SCALE 1 : 100 |



SITE NAME
Hamble Airfield
Southampton, Hampshire

SITE REF. SU 4708

DRILLING CONTRACTOR: Ready Mixed Concrete (UK) Ltd
EQUIPMENT AND METHOD: Power Auger

GROUND LEVEL 20.20 m AOD
CO-ORDINATES E 447511.00 N 107821.00
DATE DRILLED
START : 14/6/95
FINISH : 14/6/95

| DESCRIPTION | REDUCED LEVEL (m AOD) | LEGEND | DEPTH & THICKNESS (m) | SAMPLE DEPTH (m) & TYPE | WATER STRIKE | MONITOR INSTALLATION |
|-----------------------------|-----------------------|--------|-----------------------|-------------------------|--------------|----------------------|
| TOP SOIL Brown soft CLAY | 19.90 | | 0.30 | | | |
| | | | (1.70) | | | |
| HOGGIN | 18.20 | | 2.00 | | | |
| | | | (2.00) | | | |
| Brown sandy GRAVEL | 16.20 | | 4.00 | | | |
| | | | (1.00) | | | |
| Green yellow fine SAND | 15.20 | | 5.00 | | | |
| | | | (1.00) | | | |
| | 14.20 | | 6.00 | | | |



| | | | | |
|--|--|--------------|---|---|
| KEY B - Bulk disturbed sample D - Small disturbed sample U - Undisturbed sample W - Water sample X - Cuttings sample c - Coarse grained m - Medium grained f - Fine grained | - Water strike 1 - Standing water 1 - Water strike 2 - Standing water 2 | NOTES | MONITORING POINT ELEVATION & ID Ref. Elev. mAOD | TOTAL DEPTH 6.00 METRES |
| | | | | LOGGED BY WKJ Osborn |
| | | | | DATE LOGGED 14/06/1995 |
| | | | | SCALE 1 : 100 |



SITE NAME
Hamble Airfield
Southampton, Hampshire

SITE REF. SU 4708

DRILLING CONTRACTOR: Ready Mixed Concrete (UK) Ltd
EQUIPMENT AND METHOD: Power Auger

GROUND LEVEL
 20.10 m AOD

CO-ORDINATES
 E 447520.00 N 107601.00

DATE DRILLED
START : 14/6/95
FINISH : 14/6/95

| DESCRIPTION | REDUCED LEVEL (m AOD) | LEGEND | DEPTH & THICKNESS (m) | SAMPLE DEPTH (m) & TYPE | WATER STRIKE | MONITOR INSTALLATION |
|--------------------|-----------------------|--------|-----------------------|-------------------------|--------------|----------------------|
| TOP SOIL | 19.80 | | 0.30 | | | |
| Brown clayey SAND | 19.10 | | (0.70) 1.00 | | | |
| HOGGIN | | | (2.50) | | | |
| Brown sandy GRAVEL | 16.60 | | 3.50 | | | |
| | | | (2.00) | | | |
| Green yellow SAND | 14.60 | | 5.50 | | | |
| | 14.10 | | (0.50) 6.00 | | | |

| | | | | |
|--|--|--------------|---|---|
| KEY B - Bulk disturbed sample D - Small disturbed sample U - Undisturbed sample W - Water sample X - Cuttings sample c - Coarse grained m - Medium grained f - Fine grained | - Water strike 1 - Standing water 1 - Water strike 2 - Standing water 2 | NOTES | MONITORING POINT ELEVATION & ID Ref. Elev. mAOD | TOTAL DEPTH 6.00 METRES |
| | | | | LOGGED BY WKJ Osborn |
| | | | | DATE LOGGED 14/06/1995 |
| | | | | SCALE 1 : 100 |



SITE NAME
Hamble Airfield
Southampton, Hampshire

SITE REF. SU 4708

DRILLING CONTRACTOR: Ready Mixed Concrete (UK) Ltd
EQUIPMENT AND METHOD: Power Auger

GROUND LEVEL
 20.70 m AOD

CO-ORDINATES
 E 447670.00 N 107609.00

DATE DRILLED
START : 14/6/95
FINISH : 14/6/95

| DESCRIPTION | REDUCED LEVEL (m AOD) | LEGEND | DEPTH & THICKNESS (m) | SAMPLE DEPTH (m) & TYPE | WATER STRIKE | MONITOR INSTALLATION |
|------------------------|-----------------------|--------|-----------------------|-------------------------|--------------|----------------------|
| TOP SOIL | 20.40 | | 0.30 | | | |
| Brown sandy CLAY | 19.30 | | (1.10) | | | |
| HOGGIN | 18.20 | | 1.40 | | | |
| Brown sandy GRAVEL | 15.20 | | (1.10) | | | |
| | | | 2.50 | | | |
| | | | (3.00) | | | |
| Yellow green fine SAND | 14.70 | | 5.50 | | | |
| | | | (0.50) | | | |
| | | | 6.00 | | | |

| | | | | |
|--|--|--------------|---|---|
| KEY B - Bulk disturbed sample D - Small disturbed sample U - Undisturbed sample W - Water sample X - Cuttings sample c - Coarse grained m - Medium grained f - Fine grained | - Water strike 1 - Standing water 1 - Water strike 2 - Standing water 2 | NOTES | MONITORING POINT ELEVATION & ID Ref. Elev. mAOD | TOTAL DEPTH 6.00 METRES |
| | | | | LOGGED BY WKJ Osborn |
| | | | | DATE LOGGED 14/06/1995 |
| | | | | SCALE 1 : 100 |



SITE NAME
Hamble Airfield
Southampton, Hampshire

SITE REF. SU 4708

DRILLING CONTRACTOR: Ready Mixed Concrete (UK) Ltd
EQUIPMENT AND METHOD: Power Auger

GROUND LEVEL
 20.10 m AOD

CO-ORDINATES
 E 447618.00 N 107548.00

DATE DRILLED
START : 15/6/95
FINISH : 15/6/95

| DESCRIPTION | REDUCED LEVEL (m AOD) | LEGEND | DEPTH & THICKNESS (m) | SAMPLE DEPTH (m) & TYPE | WATER STRIKE | MONITOR INSTALLATION |
|-----------------------------|-----------------------|--------|-----------------------|-------------------------|--------------|----------------------|
| TOP SOIL Soft sandy CLAY | 19.80 | | 0.30 | | | |
| | | | (1.80) | | | |
| HOGGIN | 18.00 | | 2.10 | | | |
| | | | (1.90) | | | |
| Yellow fine SAND | 16.10 | | 4.00 | | | |
| | | | (1.00) | | | |
| | 15.10 | | 5.00 | | | |

| | | | | |
|--|--|--------------|---|-------------------------------|
| KEY B - Bulk disturbed sample D - Small disturbed sample U - Undisturbed sample W - Water sample X - Cuttings sample c - Coarse grained m - Medium grained f - Fine grained | - Water strike 1 - Standing water 1 - Water strike 2 - Standing water 2 | NOTES | MONITORING POINT ELEVATION & ID Ref. Elev. mAOD | TOTAL DEPTH 5.00 METRES |
| | | | | LOGGED BY WKJ Osborn |
| | | | | DATE LOGGED 15/06/1995 |
| | | | | SCALE 1 : 100 |



SITE NAME
Hamble Airfield
Southampton, Hampshire

SITE REF. SU 4708

DRILLING CONTRACTOR: Ready Mixed Concrete (UK) Ltd
EQUIPMENT AND METHOD: Power Auger

GROUND LEVEL 20.00 m AOD
CO-ORDINATES E 447691.00 N 107399.00
DATE DRILLED
START : 15/6/95
FINISH : 15/6/95

| DESCRIPTION | REDUCED LEVEL (m AOD) | LEGEND | DEPTH & THICKNESS (m) | SAMPLE DEPTH (m) & TYPE | WATER STRIKE | MONITOR INSTALLATION |
|------------------------------|-----------------------|--------|-----------------------|-------------------------|--------------|----------------------|
| TOP SOIL Brown sandy CLAY | 19.70 | | 0.30 | | | |
| | | | (2.20) | | | |
| HOGGIN | 17.50 | | 2.50 | | | |
| | | | (3.00) | | | |
| Yellow fine SAND | 14.50 | | 5.50 | | | |
| | 14.00 | | (0.50) 6.00 | | | |

| | |
|----------------------------|--------------------|
| KEY | |
| B - Bulk disturbed sample | - Water strike 1 |
| D - Small disturbed sample | - Standing water 1 |
| U - Undisturbed sample | - Water strike 2 |
| W - Water sample | - Standing water 2 |
| X - Cuttings sample | |
| c - Coarse grained | |
| m - Medium grained | |
| f - Fine grained | |

NOTES

MONITORING POINT ELEVATION & ID
 Ref. Elev. mAOD

TOTAL DEPTH
 6.00
 METRES

LOGGED BY
 WKJ Osborn

DATE LOGGED
 15/06/1995

SCALE
 1 : 100



| | | |
|---|---|----------------------------|
| SITE NAME Hamble Airfield Southampton, Hampshire SITE REF. SU 4708 | DRILLING CONTRACTOR: Apex Drilling Services Ltd EQUIPMENT AND METHOD: Dando Light Percussion Rig | |
| | GROUND LEVEL 18.69 m AOD | CO-ORDINATES E N |

| DESCRIPTION | REDUCED LEVEL (m AOD) | LEGEND | DEPTH & THICKNESS (m) | SAMPLE DEPTH (m) & TYPE | WATER STRIKE | MONITOR INSTALLATION | |
|------------------------------------|-----------------------|--------|-----------------------|-------------------------|--------------|----------------------|---|
| Grass and TOPSOIL CLAY and SOIL | 18.49 | | 0.20 | | | | Cement seal installed with raised cover |
| Flint GRAVEL | 17.59 | | (0.90) | | | | Bentonite seal 50mm plain uPVC pipe |
| | | | 1.10 | | | | Gravel pack 50mm plain uPVC pipe |
| Dark orange GRAVEL | | | (4.90) | | | | Gravel pack 50mm slotted uPVC pipe |
| | 12.69 | | 6.00 | | | | |
| Stiff orange CLAY | 11.69 | | (1.00) | | | | |
| | 11.19 | | 7.00 | | | | |
| | | | (0.50) | | | | |
| | | | 7.50 | | 4.50 | | |

| | | | | |
|--|--|--------------|---|---|
| KEY B - Bulk disturbed sample D - Small disturbed sample U - Undisturbed sample W - Water sample X - Cuttings sample c - Coarse grained m - Medium grained f - Fine grained | - Water strike 1 - Standing water 1 - Water strike 2 - Standing water 2 | NOTES | MONITORING POINT ELEVATION & ID Ref. Elev. 18.69m AOD m AOD | TOTAL DEPTH 7.50 METRES |
| | | | | LOGGED BY Driller |
| | | | | DATE LOGGED 02/06/2011 |
| | | | | SCALE 1 : 100 |



SITE NAME
Hamble Airfield
Southampton, Hampshire

DRILLING CONTRACTOR: Apex Drilling Services Ltd
EQUIPMENT AND METHOD: Dando Light Percussion Rig

SITE REF. SU 4708

GROUND LEVEL
m AOD

CO-ORDINATES
E N

DATE DRILLED
START : 24/5/11
FINISH : 24/5/11

| DESCRIPTION | REDUCED LEVEL (m AOD) | LEGEND | DEPTH & THICKNESS (m) | SAMPLE DEPTH (m) & TYPE | WATER STRIKE | MONITOR INSTALLATION |
|----------------------------|-----------------------|--------|-----------------------|-------------------------|--------------|----------------------|
| Grass and TOPSOIL | | | (0.60) 0.60 | | | |
| Brown orange gravelly CLAY | | | (0.70) 1.30 | | | |
| Gravel | | | (1.70) 3.00 | | | |

KEY
B - Bulk disturbed sample
D - Small disturbed sample
U - Undisturbed sample
W - Water sample
X - Cuttings sample
c - Coarse grained
m - Medium grained
f - Fine grained

- Water strike 1
 - Standing water 1
 - Water strike 2
 - Standing water 2

NOTES

MONITORING POINT ELEVATION & ID
Ref. Elev. mAOD

TOTAL DEPTH
3.00
METRES
LOGGED BY
Driller
DATE LOGGED
24/05/2011
SCALE
1 : 100



SITE NAME
Hamble Airfield
Southampton, Hampshire

SITE REF. SU 4708

DRILLING CONTRACTOR: Apex Drilling Services Ltd
EQUIPMENT AND METHOD: Dando Light Percussion Rig

GROUND LEVEL **CO-ORDINATES** **DATE DRILLED**
m AOD **E N** **START : 24/5/11**
FINISH : 24/5/11

| DESCRIPTION | REDUCED LEVEL (m AOD) | LEGEND | DEPTH & THICKNESS (m) | SAMPLE DEPTH (m) & TYPE | WATER STRIKE | MONITOR INSTALLATION | |
|----------------------|-----------------------|--------|-----------------------|-------------------------|--------------|----------------------|------|
| TOPSOIL | | | 0.20 | | | | 0.30 |
| Brown clayey TOPSOIL | | | 0.60 | | | | |
| Brown Clayey GRAVEL | | | (0.50) | | | | 1.00 |
| Gravelly CLAY | | | 1.30 | | | | |
| Sandy GRAVEL | | | 1.60 | | | | 1.60 |

Cement seal installed with flush daisy cover
 Bentonite seal
 50mm plain uPVC pipe
 Gravel pack
 50mm slotted uPVC pipe

KEY

| | | |
|----------------------------|--|--------------------|
| B - Bulk disturbed sample | | - Water strike 1 |
| D - Small disturbed sample | | - Standing water 1 |
| U - Undisturbed sample | | - Water strike 2 |
| W - Water sample | | - Standing water 2 |
| X - Cuttings sample | | |
| c - Coarse grained | | |
| m - Medium grained | | |
| f - Fine grained | | |

NOTES
 Drilling terminated on cobbles/boulder.

MONITORING POINT ELEVATION & ID
 Ref. Elev. mAOD

TOTAL DEPTH
 1.60
METRES

LOGGED BY
 Driller

DATE LOGGED
 24/05/2011

SCALE
 1 : 100



SITE NAME
Hamble Airfield
Southampton, Hampshire

SITE REF. SU 4708

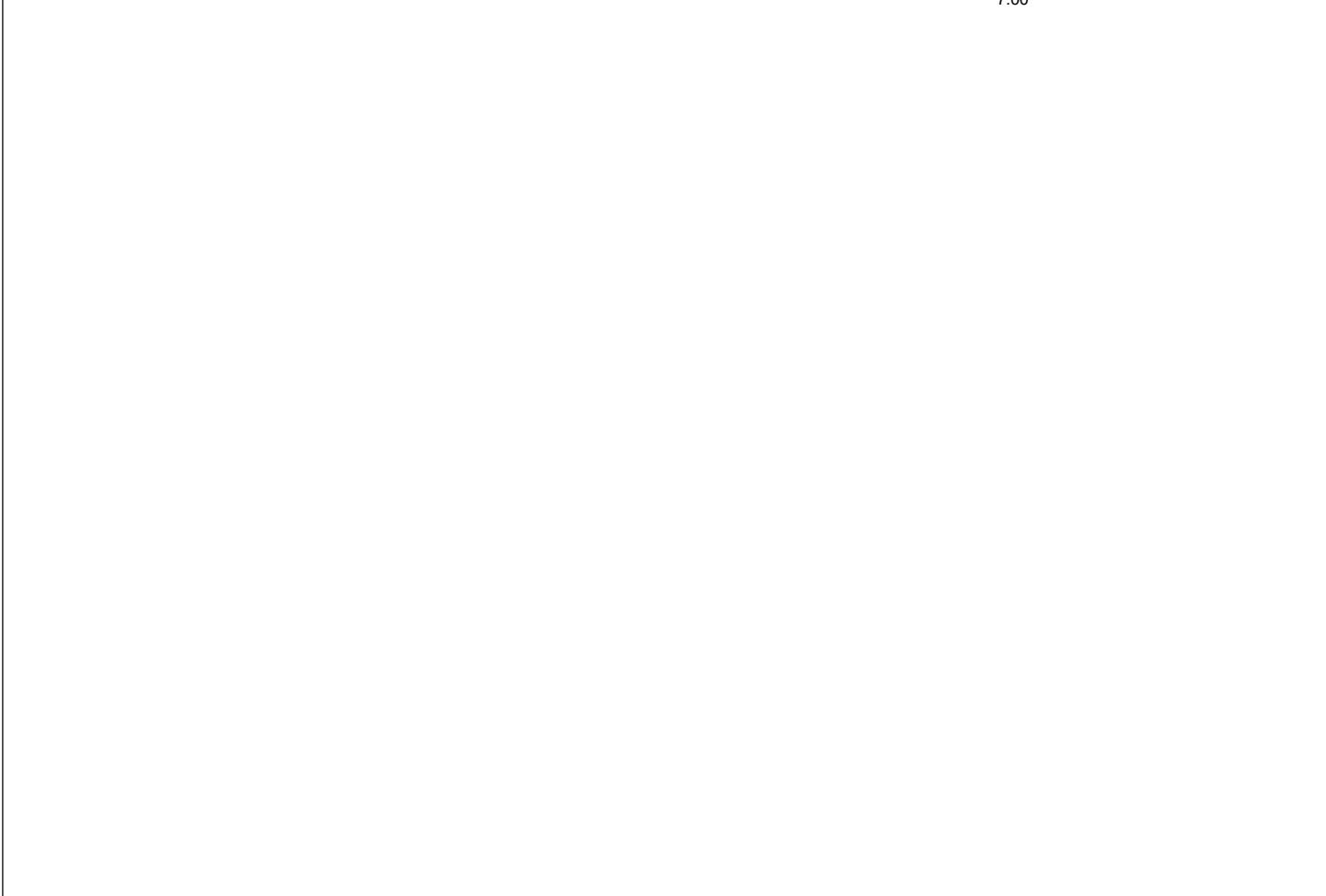
DRILLING CONTRACTOR: Apex Drilling Services Ltd
EQUIPMENT AND METHOD: Dando Light Percussion Rig

GROUND LEVEL
 21.48 m AOD

CO-ORDINATES
 E N

DATE DRILLED
START : 23/5/11
FINISH : 23/5/11

| DESCRIPTION | REDUCED LEVEL (m AOD) | LEGEND | DEPTH & THICKNESS (m) | SAMPLE DEPTH (m) & TYPE | WATER STRIKE | MONITOR INSTALLATION | |
|-----------------------|-----------------------|--------|-----------------------|-------------------------|--------------|----------------------|------|
| TOPSOIL | 21.28 | | 0.20 | | | | 0.30 |
| Brown GRAVEL and CLAY | | | (3.00) | | | | 1.80 |
| | 18.28 | | 3.20 | | | | 2.80 |
| Orange clayey GRAVEL | 17.68 | | (0.60) | | | | |
| Stiff grey CLAY | | | 3.80 | | | | |
| | | | (3.20) | | | | |
| | 14.48 | | 7.00 | | | | 6.80 |
| | | | | | | | 7.00 |



| | | | |
|--|--------------|---|---|
| KEY B - Bulk disturbed sample D - Small disturbed sample U - Undisturbed sample W - Water sample X - Cuttings sample c - Coarse grained m - Medium grained f - Fine grained | NOTES | MONITORING POINT ELEVATION & ID Ref. Elev. 21.48m AOD m AOD | TOTAL DEPTH 7.00 METRES |
| | | | LOGGED BY Driller |
| | | | DATE LOGGED 23/05/2011 |
| | | | SCALE 1 : 100 |



SITE NAME
Hamble Airfield
Southampton, Hampshire

SITE REF. SU 4708

DRILLING CONTRACTOR: Apex Drilling Services Ltd
EQUIPMENT AND METHOD: Dando Light Percussion Rig

GROUND LEVEL **CO-ORDINATES** **DATE DRILLED**
m AOD **E N** **START : 31/5/11**
FINISH : 1/6/11

| DESCRIPTION | REDUCED LEVEL (m AOD) | LEGEND | DEPTH & THICKNESS (m) | SAMPLE DEPTH (m) & TYPE | WATER STRIKE | MONITOR INSTALLATION | |
|-------------------------|-----------------------|--------|-----------------------|-------------------------|--------------|----------------------|---|
| Grass and TOPSOIL | | | 0.20 | | | | 0.40 Cement seal installed with flush daisy cover |
| Clayey TOPSOIL | | | (0.80) | | | | 1.00 Bentonite seal |
| Brown CLAY | | | 1.00 | | | | 50mm plain uPVC pipe |
| Gravely CLAY | | | (0.60) | | | | Arisings |
| Brown orange sandy CLAY | | | 1.80 | | | | 50mm plain uPVC pipe |
| Dense flint GRAVEL | | | (2.50) | | | | Bentonite seal |
| | | | (1.00) | | | | 50mm plain uPVC pipe |
| | | | 3.10 | | | | 2.80 Gravel pack |
| | | | (2.40) | | | | 3.00 50mm plain uPVC pipe |
| | | | 5.50 | | | | Gravel pack |
| Orange sandy CLAY | | | (0.50) | | | | 50mm slotted uPVC pipe |
| | | | 6.00 | | | | 6.00 |

KEY

B - Bulk disturbed sample - Water strike 1
D - Small disturbed sample - Standing water 1
U - Undisturbed sample - Water strike 2
W - Water sample - Standing water 2
X - Cuttings sample
c - Coarse grained
m - Medium grained
f - Fine grained

NOTES

MONITORING POINT ELEVATION & ID
Ref. Elev. mAOD

TOTAL DEPTH
6.00
METRES

LOGGED BY
Driller

DATE LOGGED
01/06/2011

SCALE
1 : 100



SITE NAME
Hamble Airfield
Southampton, Hampshire

SITE REF. SU 4708

DRILLING CONTRACTOR: Apex Drilling Services Ltd
EQUIPMENT AND METHOD: Dando Light Percussion Rig

GROUND LEVEL
 20.58 m AOD

CO-ORDINATES
 E N

DATE DRILLED
START : 25/5/11
FINISH : 25/5/11

| DESCRIPTION | REDUCED LEVEL (m AOD) | LEGEND | DEPTH & THICKNESS (m) | SAMPLE DEPTH (m) & TYPE | WATER STRIKE | MONITOR INSTALLATION | |
|--------------------|-----------------------|--------|-----------------------|-------------------------|--------------|----------------------|---|
| TOPSOIL | 20.38 | | 0.20 | | | | |
| Clayey TOPSOIL | 20.08 | | 0.50 | | | | 0.30 Cement seal installed with flush daisy cover |
| Brown CLAY | 18.98 | | (1.10) | | | | Bentonite seal 50mm plain uPVC pipe |
| Dense GRAVEL | 16.78 | | (2.20) | | | | 2.00 |
| Brown Sandy GRAVEL | 16.08 | | (0.70) | | | | Gravel pack 50mm slotted uPVC pipe |
| | | | 4.50 | | | | 4.50 |

| | |
|----------------------------|--------------------|
| KEY | |
| B - Bulk disturbed sample | - Water strike 1 |
| D - Small disturbed sample | - Standing water 1 |
| U - Undisturbed sample | - Water strike 2 |
| W - Water sample | - Standing water 2 |
| X - Cuttings sample | |
| c - Coarse grained | |
| m - Medium grained | |
| f - Fine grained | |

NOTES

MONITORING POINT ELEVATION & ID
 Ref. Elev. 20.58m AOD m AOD

TOTAL DEPTH
 4.50
METRES

LOGGED BY
 Driller

DATE LOGGED
 25/05/2011

SCALE
 1 : 100



SITE NAME
Hamble Airfield
Southampton, Hampshire

SITE REF. SU 4708

DRILLING CONTRACTOR: Apex Drilling Services Ltd
EQUIPMENT AND METHOD: Dando Light Percussion Rig

GROUND LEVEL 19.29 m AOD
CO-ORDINATES E N
DATE DRILLED
START : 27/5/11
FINISH : 27/5/11

| DESCRIPTION | REDUCED LEVEL (m AOD) | LEGEND | DEPTH & THICKNESS (m) | SAMPLE DEPTH (m) & TYPE | WATER STRIKE | MONITOR INSTALLATION | |
|---------------|-----------------------|--------|-----------------------|-------------------------|--------------|----------------------|---|
| Brown TOPSOIL | | | (1.30) | | | | 0.40 Cement seal installed with flush daisy cover |
| | 17.99 | | 1.30 | | | | Bentonite seal |
| GRAVEL | | | (1.70) | | | | 1.30 50mm plain uPVC pipe |
| | | | (1.70) | | | | 1.50 Gravel pack |
| | | | (1.70) | | | | 50mm plain uPVC pipe |
| | | | (1.70) | | | | Gravel pack |
| | | | (1.70) | | | | 50mm slotted uPVC pipe |
| | 16.29 | | 3.00 | | | | 3.00 |

| | |
|----------------------------|--------------------|
| KEY | |
| B - Bulk disturbed sample | - Water strike 1 |
| D - Small disturbed sample | - Standing water 1 |
| U - Undisturbed sample | |
| W - Water sample | - Water strike 2 |
| X - Cuttings sample | - Standing water 2 |
| c - Coarse grained | |
| m - Medium grained | |
| f - Fine grained | |

NOTES

MONITORING POINT ELEVATION & ID
 Ref. Elev. 19.29m AOD m AOD

TOTAL DEPTH
 3.00
METRES

LOGGED BY
 Driller

DATE LOGGED
 27/05/2011

SCALE
 1 : 100



SITE NAME
Hamble Airfield
Southampton, Hampshire

DRILLING CONTRACTOR: D K Symes Assoc.
EQUIPMENT AND METHOD:

SITE REF. SU 4708

GROUND LEVEL
 20.70 m AOD

CO-ORDINATES
 E 447843.11 N 107537.04

DATE DRILLED
START : 28/2/08
FINISH : 29/2/08

| DESCRIPTION | REDUCED LEVEL (m AOD) | LEGEND | DEPTH & THICKNESS (m) | SAMPLE DEPTH (m) & TYPE | WATER STRIKE | MONITOR INSTALLATION | |
|--|-----------------------|--------|-----------------------|-------------------------|--------------|----------------------|---|
| Grass over TOPSOIL | 20.20 | | (0.50) | | | | 0.50 |
| Soft and firm light brown/orange sandy CLAY Soft brown clayey SAND/sandy CLAY. | 20.00 | | 0.70 | | | | |
| | | | (1.60) | | | | |
| Red brown clayey sand and GRAVEL. | 18.40 | | 2.30 | | | | |
| | 18.00 | | 2.70 | 2.70 | | | Bentonite seal 100mm uPVC plain pipe |
| Brown sandy GRAVEL. Sub-angular to sub-rounded gravel. Sand is generally medium to coarse grained. | | | (4.00) | B | | | 4.60 |
| | | | 6.10 | | ↓ 5.65 | | |
| | 14.00 | | 6.70 | 6.70 | ↓ 6.70 | | Gravel filter pack 100mm uPVC slotted pipe |
| Yellow/green silty SAND with sandy clay bands. Sand is fine to medium grained. | | | (2.10) | B | | | 7.60 |
| | | | 8.80 | | | | Gravel bottom fill |
| | 11.90 | | | | | | 8.80 |

- 9.00 -

- KEY**
- B - Bulk disturbed sample
 - D - Small disturbed sample
 - U - Undisturbed sample
 - W - Water sample
 - X - Cuttings sample
 - c - Coarse grained
 - m - Medium grained
 - f - Fine grained

- Water strike 1
- Standing water 1
- Water strike 2
- Standing water 2

NOTES
 Water added to assist drilling 2.7 - 4.5 m.
 Borehole cover repaired by Apex Drilling Services Ltd. in 2011.

MONITORING POINT ELEVATION & ID
 Ref. Elev. mAOD

| |
|-------------------------------|
| TOTAL DEPTH 8.80 METRES |
| LOGGED BY |
| DATE LOGGED |
| SCALE 1 : 100 |



SITE NAME
Hamble Airfield
Southampton, Hampshire

SITE REF. SU 4708

DRILLING CONTRACTOR: D K Symes Assoc.
EQUIPMENT AND METHOD:

GROUND LEVEL 15.94 m AOD
CO-ORDINATES E 448083.18 N 107647.35
DATE DRILLED
START : 20/2/08
FINISH : 20/2/08

| DESCRIPTION | REDUCED LEVEL (m AOD) | LEGEND | DEPTH & THICKNESS (m) | SAMPLE DEPTH (m) & TYPE | WATER STRIKE | MONITOR INSTALLATION | |
|-----------------------|-----------------------|--------|-----------------------|-------------------------|------------------|----------------------|--|
| Grass over TOPSOIL | 15.44 | | (0.50) | 0.50 | | | Raised cover installed |
| Brown sandy GRAVEL | | | (4.60) | B 2.50 B | ↓ 2.46 ↓ 3.00 | | Bentonite seal 100mm uPVC plain pipe Gravel filter pack 100mm uPVC slotted pipe |
| Brown SAND | 10.84 | | 5.10 | 5.10 | | | Gravel bottom fill |
| Firm stiff brown CLAY | 10.34 | | 5.60 | | | | |

KEY

| | | |
|----------------------------|--|--------------------|
| B - Bulk disturbed sample | | - Water strike 1 |
| D - Small disturbed sample | | - Standing water 1 |
| U - Undisturbed sample | | - Water strike 2 |
| W - Water sample | | - Standing water 2 |
| X - Cuttings sample | | |
| c - Coarse grained | | |
| m - Medium grained | | |
| f - Fine grained | | |

NOTES

Water added to assist drilling 1.0-5.5 m.
 Borehole cover repaired by Apex Drilling Services Ltd. in 2011

MONITORING POINT ELEVATION & ID
 Ref. Elev. 15.94m AOD m AOD

TOTAL DEPTH
 5.60
METRES

LOGGED BY

DATE LOGGED

SCALE
 1 : 100



SITE NAME
Hamble Airfield
Southampton, Hampshire

SITE REF. SU 4708

DRILLING CONTRACTOR: Apex Drilling Services Ltd
EQUIPMENT AND METHOD: Dando Light Percussion Rig

GROUND LEVEL **CO-ORDINATES** **DATE DRILLED**
m AOD **E N** **START : 26/5/11**
FINISH : 26/5/11

| DESCRIPTION | REDUCED LEVEL (m AOD) | LEGEND | DEPTH & THICKNESS (m) | SAMPLE DEPTH (m) & TYPE | WATER STRIKE | MONITOR INSTALLATION | |
|----------------------|-----------------------|--------|-----------------------|-------------------------|--------------|----------------------|--|
| Brown clayey TOPSOIL | | | (1.60) | | | | 0.50 Cement seal installed with flush daisy cover 1.60 Bentonite seal 50mm plain uPVC pipe |
| Dense brown GRAVEL | | | (2.90) | | | | 1.80 Gravel pack 50mm slotted uPVC pipe |
| Stiff brown CLAY | | | (4.50) | | | | 4.80 Gravel bottom fill |
| | | | (5.00) | | | | 5.00 |

| | |
|----------------------------|--------------------|
| KEY | |
| B - Bulk disturbed sample | - Water strike 1 |
| D - Small disturbed sample | - Standing water 1 |
| U - Undisturbed sample | - Water strike 2 |
| W - Water sample | - Standing water 2 |
| X - Cuttings sample | |
| c - Coarse grained | |
| m - Medium grained | |
| f - Fine grained | |

NOTES

MONITORING POINT ELEVATION & ID
 Ref. Elev. mAOD

TOTAL DEPTH
 5.00
METRES

LOGGED BY
 Driller

DATE LOGGED
 26/05/2011

SCALE
 1 : 100



| | | | |
|---|--|--|--|
| SITE NAME Hamble Airfield Southampton, Hampshire SITE REF. SU 4708 | DRILLING CONTRACTOR: D K Symes Assoc. EQUIPMENT AND METHOD: | | |
| | GROUND LEVEL 20.07 m AOD | CO-ORDINATES E 447876.73 N 107309.65 | DATE DRILLED START : 3/3/08 FINISH : 3/3/08 |

| DESCRIPTION | REDUCED LEVEL (m AOD) | LEGEND | DEPTH & THICKNESS (m) | SAMPLE DEPTH (m) & TYPE | WATER STRIKE | MONITOR INSTALLATION | |
|---|-----------------------|--------|-----------------------|-------------------------|--------------|----------------------|---|
| Grass over TOPSOIL | 19.17 | | (0.90) 0.90 | | | | 0.50 Raised cover installed |
| Soft brown sandy CLAY | 17.97 | | (1.20) 2.10 | | | | Bentonite seal 100mm uPVC plain pipe |
| Red brown clayey sandy GRAVEL | 17.37 | | (0.60) 2.70 | 2.70 | | | |
| Brown sandy GRAVEL. Subangular to subrounded fine to coarse flint gravel with some cobbles. Sand generally medium/coarse grained. | | | (3.60) | B | ↓ 5.53 | | 3.50 Gravel filter pack 100mm uPVC slotted pipe |
| Yellow SAND with yellow brown sandy clay bands. | 13.77 | | 6.30 | 6.30 | ↓ 6.30 | | 6.50 Gravel bottom fill |
| | 12.07 | | (1.70) 8.00 | | | | 8.00 |

| | | | |
|--|---|---|---|
| KEY B - Bulk disturbed sample D - Small disturbed sample U - Undisturbed sample W - Water sample X - Cuttings sample c - Coarse grained m - Medium grained f - Fine grained - Water strike 1 - Standing water 1 - Water strike 2 - Standing water 2 | NOTES Water added to assist drilling 2.7 - 8.0 m. Borehole cover repaired by Apex Drilling Services Ltd. in 2011 | MONITORING POINT ELEVATION & ID Ref. Elev. 20.07m AOD m AOD | TOTAL DEPTH 8.00 METRES |
| | | | LOGGED BY |
| | | | DATE LOGGED |
| | | | SCALE 1 : 100 |



SITE NAME
Hamble Airfield
Southampton, Hampshire

SITE REF. SU 4708

DRILLING CONTRACTOR: D K Symes Assoc.
EQUIPMENT AND METHOD:

GROUND LEVEL 18.70 m AOD
CO-ORDINATES E 447420.42 N 108156.24
DATE DRILLED
START : 25/2/08
FINISH : 26/2/08

| DESCRIPTION | REDUCED LEVEL (m AOD) | LEGEND | DEPTH & THICKNESS (m) | SAMPLE DEPTH (m) & TYPE | WATER STRIKE | MONITOR INSTALLATION |
|--|-----------------------|--------|-----------------------|-------------------------|--------------|----------------------|
| Grass over TOPSOIL. | 18.00 | | (0.70) 0.70 | 0.70 | | |
| Yellow & orange brown clayey to very clayey SAND & GRAVEL (hoggin). ang. to subrounded fine to medium gravel (occ. coarse) of flint. sand is fine to coarse. | 16.10 | | (1.90) 2.60 | B | ↓ 2.74 | |
| Grey brown, brown with depth silty sandy GRAVEL. subangular to rounded flint gravel, sand is fine to coarse. | 15.10 | | (1.00) 3.60 | 3.60 | ↓ 3.60 | |
| Brown sandy GRAVEL, fine to coarse gravel gen. med/coarse occ. cobbles of flint. sand is fin to coarse. | 12.70 | | (2.40) 6.00 | B | | |
| Brown sandy CLAY. | 12.50 | | 6.20 | 6.00 | | |

KEY

| | |
|----------------------------|----------------------|
| B - Bulk distrubed sample | ↓ - Water strike 1 |
| D - Small distrubed sample | ↓ - Standing water 1 |
| U - Undistrubed sample | ↓ - Water strike 2 |
| W - Water sample | ↓ - Standing water 2 |
| X - Cuttings sample | |
| c - Coarse grained | |
| m - Medium grained | |
| f - Fine grained | |

NOTES
 Water added to assist drilling 2.6 - 6.0 m.

MONITORING POINT ELEVATION & ID
 Ref. Elev. mAOD

TOTAL DEPTH
 6.20
METRES
LOGGED BY
DATE LOGGED
SCALE
 1 : 100



SITE NAME
Hamble Airfield
Southampton, Hampshire

SITE REF. SU 4708

DRILLING CONTRACTOR: D K Symes Assoc.
EQUIPMENT AND METHOD:

GROUND LEVEL 22.42 m AOD
CO-ORDINATES E 447639.22 N 108301.06
DATE DRILLED
START : 21/2/08
FINISH : 21/2/08

| DESCRIPTION | REDUCED LEVEL (m AOD) | LEGEND | DEPTH & THICKNESS (m) | SAMPLE DEPTH (m) & TYPE | WATER STRIKE | MONITOR INSTALLATION |
|--|-----------------------|--------|-----------------------|-------------------------|------------------|----------------------|
| Grass over TOPSOIL. | 22.02 | | 0.40 | | | |
| Firm brown SILT/CLAY. | 21.72 | | 0.70 | 0.70 | | |
| Light brown SAND & GRAVEL / sandy GRAVEL. sub ang. to rounded fine to coarse gravel (clayey to 1.3 m) occ/some cobbles of black & brown flint. Sand is fine to coarse. | 18.72 | | (3.00) | B | ↓ 2.50 ↓ 3.04 | |
| Orange brown silty SAND with frequent soft brown sandy clay bands. | 17.02 | | (1.70) | 3.70 | | |
| Firm blue grey slightly sandy CLAY. | 16.02 | | (1.00) | 5.50 B | | |
| | | | 6.40 | | | |

KEY

| | |
|----------------------------|----------------------|
| B - Bulk disturbed sample | ↓ - Water strike 1 |
| D - Small disturbed sample | ↓ - Standing water 1 |
| U - Undisturbed sample | ↓ - Water strike 2 |
| W - Water sample | ↓ - Standing water 2 |
| X - Cuttings sample | |
| c - Coarse grained | |
| m - Medium grained | |
| f - Fine grained | |

NOTES

Water added to assist drilling 1.3 - 5.2 m. Caving below 3.7m.

MONITORING POINT ELEVATION & ID

Ref. Elev. mAOD

| |
|---|
| TOTAL DEPTH 6.40 METRES |
| LOGGED BY |
| DATE LOGGED |
| SCALE 1 : 100 |



SITE NAME
Hamble Airfield
Southampton, Hampshire

SITE REF. SU 4708

DRILLING CONTRACTOR: D K Symes Assoc.
EQUIPMENT AND METHOD:

GROUND LEVEL 21.75 m AOD
CO-ORDINATES E 447873.19 N 108353.22
DATE DRILLED
START : 18/2/08
FINISH : 19/2/08

| DESCRIPTION | REDUCED LEVEL (m AOD) | LEGEND | DEPTH & THICKNESS (m) | SAMPLE DEPTH (m) & TYPE | WATER STRIKE | MONITOR INSTALLATION |
|--|-----------------------|--------|-----------------------|-------------------------|--------------|----------------------|
| Grass over TOPSOIL. | 21.15 | | (0.60) 0.60 | | | |
| Soft & firm orange brown mottled grey SILT/CLAY. | 20.65 | | (0.50) 0.50 | 1.10 | ↓ 1.37 | |
| Light brown slightly silty SAND & GRAVEL. Ang. to subrounded fine to coarse gravel of brown, grey & white flint. Sand is fine to coarse. | 18.85 | | (1.80) 2.90 | B | | |
| Soft & firm orange grey sandy CLAY. | 18.25 | | (0.60) 3.50 | 2.90 | ↓ 2.90 | |
| Firm and stiff grey blue CLAY weathered brown on top. | 17.95 | | 3.80 | | | |

KEY

| | |
|----------------------------|----------------------|
| B - Bulk disturbed sample | ↓ - Water strike 1 |
| D - Small disturbed sample | ↓ - Standing water 1 |
| U - Undisturbed sample | ↓ - Water strike 2 |
| W - Water sample | ↓ - Standing water 2 |
| X - Cuttings sample | |
| c - Coarse grained | |
| m - Medium grained | |
| f - Fine grained | |

NOTES

MONITORING POINT ELEVATION & ID
 Ref. Elev. mAOD

TOTAL DEPTH
 3.80
METRES

LOGGED BY

DATE LOGGED

SCALE
 1 : 100



SITE NAME
Hamble Airfield
Southampton, Hampshire

SITE REF. SU 4708

DRILLING CONTRACTOR: D K Symes Assoc.
EQUIPMENT AND METHOD:

GROUND LEVEL 19.63 m AOD
CO-ORDINATES E 447673.80 N 108047.44
DATE DRILLED
START : 26/2/08
FINISH : 26/2/08

| DESCRIPTION | REDUCED LEVEL (m AOD) | LEGEND | DEPTH & THICKNESS (m) | SAMPLE DEPTH (m) & TYPE | WATER STRIKE | MONITOR INSTALLATION |
|---|-----------------------|--------|-----------------------|-------------------------|--------------|----------------------|
| Grass over TOPSOIL. | 18.83 | | (0.80) 0.80 | | | |
| Orange brown very sandy CLAY. Fine to medium sand, traces of fine gravel. | 18.03 | | (0.80) 1.60 | | | |
| Brown sandy gravelly CLAY / very clayey sand & gravel. Fine to medium flint gravel (hoggin). | 16.43 | | (1.60) 3.20 | 3.20 | ↓ 3.20 | |
| Brown sandy GRAVEL. Subangular to subrounded fine to coarse gravel, occ./some cobbles - of white grey & brown flints. Sand is fine to coarse. | 14.73 | | (1.70) 4.90 | B | ↓ 3.86 | |
| Firm orange brown sandy CLAY with sand lenses. | 13.63 | | (1.10) 6.00 | 4.90 | | |

KEY

| | |
|----------------------------|----------------------|
| B - Bulk disturbed sample | ↓ - Water strike 1 |
| D - Small disturbed sample | ↓ - Standing water 1 |
| U - Undisturbed sample | ↓ - Water strike 2 |
| W - Water sample | ↓ - Standing water 2 |
| X - Cuttings sample | |
| c - Coarse grained | |
| m - Medium grained | |
| f - Fine grained | |

NOTES
 Water added to assist drilling 3.2 - 5.5 m.

MONITORING POINT ELEVATION & ID
 Ref. Elev. mAOD

TOTAL DEPTH
 6.00
METRES

LOGGED BY

DATE LOGGED

SCALE
 1 : 100



SITE NAME
Hamble Airfield
Southampton, Hampshire

SITE REF. SU 4708

DRILLING CONTRACTOR: D K Symes Assoc.
EQUIPMENT AND METHOD:

GROUND LEVEL 20.54 m AOD
CO-ORDINATES E 447511.00 N 107821.00
DATE DRILLED
START : 27/2/08
FINISH : 27/2/08

| DESCRIPTION | REDUCED LEVEL (m AOD) | LEGEND | DEPTH & THICKNESS (m) | SAMPLE DEPTH (m) & TYPE | WATER STRIKE | MONITOR INSTALLATION |
|---|-----------------------|--------|-----------------------|-------------------------|--------------|----------------------|
| Grass over TOPSOIL. | 19.94 | | (0.60) 0.60 | | | |
| Soft light brown slightly sandy SILT/CLAY. | 18.94 | | (1.00) 1.60 | | | |
| Brown clayey GRAVEL / gravelly CLAY (poor hogin), gravel fine to medium. | 18.24 | | (0.70) 2.30 | 2.30 | ↓ 2.40 | |
| Brown sandy GRAVEL. Fine to coarse flint gravel occ. cobble. Sand generally medium / coarse. | 17.04 | | (1.20) 3.50 | B | | |
| Suspect hydrocarbon contamination at 4.5-4.8 m. Black dry residue on gravel. No oil sheen on water. | 15.24 | | (1.80) 5.30 | | ↓ 4.72 | |
| Firm yellow brown slightly sandy CLAY. | 14.54 | | (0.70) 6.00 | 5.30 | | |

| | |
|----------------------------|----------------------|
| KEY | |
| B - Bulk disturbed sample | ↓ - Water strike 1 |
| D - Small disturbed sample | ↓ - Standing water 1 |
| U - Undisturbed sample | ↓ - Water strike 2 |
| W - Water sample | ↓ - Standing water 2 |
| X - Cuttings sample | |
| c - Coarse grained | |
| m - Medium grained | |
| f - Fine grained | |

NOTES
 Water added to assist drilling 2.3 - 5.5 m.

MONITORING POINT ELEVATION & ID
 Ref. Elev. mAOD

TOTAL DEPTH
 6.00
METRES

LOGGED BY

DATE LOGGED

SCALE
 1 : 100



SITE NAME
Hamble Airfield
Southampton, Hampshire

SITE REF. SU 4708

DRILLING CONTRACTOR: D K Symes Assoc.
EQUIPMENT AND METHOD:

GROUND LEVEL 19.31 m AOD
CO-ORDINATES E 447967.79 N 107921.56
DATE DRILLED
START : 19/2/08
FINISH : 20/2/08

| DESCRIPTION | REDUCED LEVEL (m AOD) | LEGEND | DEPTH & THICKNESS (m) | SAMPLE DEPTH (m) & TYPE | WATER STRIKE | MONITOR INSTALLATION |
|---|-----------------------|--------|-----------------------|-------------------------|--------------|----------------------|
| Grass over TOPSOIL. | 18.81 | | (0.50) | 0.50 | | |
| Brown silty SAND & GRAVEL in part gravelly sand. To clayey sand & gravel down. Ang. To rounded fine to medium gravel of flint. Sand is fine to coarse (hoggin). | | | (2.70) | B | | |
| Yellow brown clayey SAND with frequent brown sandy clay bands. Sand is fine. | 16.11 | | 3.20 | 3.20 | | |
| | | | (5.00) | B | | |
| | 11.11 | | 8.20 | 8.20 | | |
| Firm to stiff yellow brown slightly sandy CLAY. | 11.01 | | 8.30 | | | |

KEY

| | | |
|----------------------------|--|--------------------|
| B - Bulk disturbed sample | | - Water strike 1 |
| D - Small disturbed sample | | - Standing water 1 |
| U - Undisturbed sample | | - Water strike 2 |
| W - Water sample | | - Standing water 2 |
| X - Cuttings sample | | |
| c - Coarse grained | | |
| m - Medium grained | | |
| f - Fine grained | | |

NOTES

Water added to assist drilling 3.0 - 8.0 m.

MONITORING POINT ELEVATION & ID

Ref. Elev. mAOD

| |
|---|
| TOTAL DEPTH 8.30 METRES |
| LOGGED BY |
| DATE LOGGED |
| SCALE 1 : 100 |



SITE NAME
Hamble Airfield
Southampton, Hampshire

SITE REF. SU 4708

DRILLING CONTRACTOR: D K Symes Assoc.
EQUIPMENT AND METHOD:

GROUND LEVEL 21.40 m AOD
CO-ORDINATES E 447730.70 N 107781.38
DATE DRILLED
START : 27/2/08
FINISH : 28/2/08

| DESCRIPTION | REDUCED LEVEL (m AOD) | LEGEND | DEPTH & THICKNESS (m) | SAMPLE DEPTH (m) & TYPE | WATER STRIKE | MONITOR INSTALLATION |
|---|-----------------------|--------|-----------------------|-------------------------|--------------|----------------------|
| Grass over TOPSOIL. | 20.70 | | (0.70) 0.70 | | | |
| Soft light brown very sandy CLAY. | | | (1.40) | | | |
| Soft brown gravelly CLAY. | 19.30 | | 2.10 | | | |
| Brown silty SAND & GRAVEL (hoggin). | 18.60 | | (0.70) 2.80 | | | |
| Brown SAND & GRAVEL. Ang. To subrounded fine to coarse flint gravel occ. Cobble. Sand is fine to coarse generally coarse. | 18.20 | | 3.20 | 3.20 | | |
| Some slight hydrocarbon contamination 4.0-5.0 m depth. Dry black residue on gravel. No oil sheen on water. | 16.90 | | (1.30) 4.50 | B | | |
| | | | (2.00) | | | 5.80 |
| Yellow brown SILTY SAND with some brown sandy clay bands. | 14.90 | | 6.50 | 6.50 | | |
| | 14.10 | | (0.80) 7.30 | | | |

KEY

| | | |
|----------------------------|--|--------------------|
| B - Bulk disturbed sample | | - Water strike 1 |
| D - Small disturbed sample | | - Standing water 1 |
| U - Undisturbed sample | | |
| W - Water sample | | - Water strike 2 |
| X - Cuttings sample | | - Standing water 2 |
| c - Coarse grained | | |
| m - Medium grained | | |
| f - Fine grained | | |

NOTES

Water added to assist drilling 2.6 - 7.0 m.
 Possible perched water 2.6 m.

MONITORING POINT ELEVATION & ID
 Ref. Elev. mAOD

TOTAL DEPTH
 7.30
METRES

LOGGED BY

DATE LOGGED

SCALE
 1 : 100



SITE NAME
Hamble Airfield
Southampton, Hampshire

SITE REF. SU 4708

DRILLING CONTRACTOR: D K Symes Assoc.
EQUIPMENT AND METHOD:

GROUND LEVEL 19.90 m AOD
CO-ORDINATES E 447582.12 N 107539.80
DATE DRILLED
START : 4/3/08
FINISH : 4/3/08

| DESCRIPTION | REDUCED LEVEL (m AOD) | LEGEND | DEPTH & THICKNESS (m) | SAMPLE DEPTH (m) & TYPE | WATER STRIKE | MONITOR INSTALLATION |
|---|-----------------------|--------|-----------------------|-------------------------|--------------|----------------------|
| Grass over TOPSOIL. | 19.30 | | (0.60) 0.60 | | | |
| Firm brown SILT/CLAY. | 18.30 | | (1.00) 1.60 | | | |
| Brown clayey sandy GRAVEL / gravelly CLAY (hoggin). | 17.90 | | 2.00 | 2.00 | | |
| Brown sandy GRAVEL. Ang. to subrounded fine to coarse gravel & flint occ. cobbles. Sand generally med / coarse. | | | (3.70) | B | ↓ 4.52 | |
| Brown silty SAND with brown clay bands. | 14.20 | | 5.70 | 5.70 | ↓ 5.70 | |
| | 12.40 | | (1.80) 7.50 | | | |

| | |
|----------------------------|--|
| KEY | |
| B - Bulk disturbed sample | |
| D - Small disturbed sample | |
| U - Undisturbed sample | |
| W - Water sample | |
| X - Cuttings sample | |
| c - Coarse grained | |
| m - Medium grained | |
| f - Fine grained | |
| | |
| | |
| | |
| | |
| | |

NOTES
 Water added to assist drilling 2.0 - 7.5 m.

MONITORING POINT ELEVATION & ID
 Ref. Elev. mAOD

TOTAL DEPTH
 7.50
METRES
LOGGED BY
DATE LOGGED
SCALE
 1 : 100



SITE NAME
Hamble Airfield
Southampton, Hampshire

SITE REF. SU 4708

DRILLING CONTRACTOR: D K Symes Assoc.
EQUIPMENT AND METHOD:

GROUND LEVEL 16.40 m AOD
CO-ORDINATES E 448109.14 N 107324.77
DATE DRILLED
START : 21/2/08
FINISH : 21/2/08

| DESCRIPTION | REDUCED LEVEL (m AOD) | LEGEND | DEPTH & THICKNESS (m) | SAMPLE DEPTH (m) & TYPE | WATER STRIKE | MONITOR INSTALLATION |
|---|-----------------------|--------|-----------------------|-------------------------|--------------|----------------------|
| Grass over TOPSOIL. | 15.80 | | (0.60) 0.60 | | | |
| Very dense silty sandy GRAVEL. Ang. To subrounded fine to coarse gravel of flint occ. cobble. Sand is fine to coarse. Water draining away immediately. Unable to progress borehole. | 15.00 | | (0.80) 1.40 | | | |

| | |
|----------------------------|--------------------|
| KEY | |
| B - Bulk disturbed sample | - Water strike 1 |
| D - Small disturbed sample | - Standing water 1 |
| U - Undisturbed sample | - Water strike 2 |
| W - Water sample | - Standing water 2 |
| X - Cuttings sample | |
| c - Coarse grained | |
| m - Medium grained | |
| f - Fine grained | |

NOTES
 Water added to assist drilling 1.0 - 1.4 m.

MONITORING POINT ELEVATION & ID
 Ref. Elev. mAOD

TOTAL DEPTH
 1.40
METRES

LOGGED BY

DATE LOGGED

SCALE
 1 : 100



SITE NAME
Hamble Airfield
Southampton, Hampshire

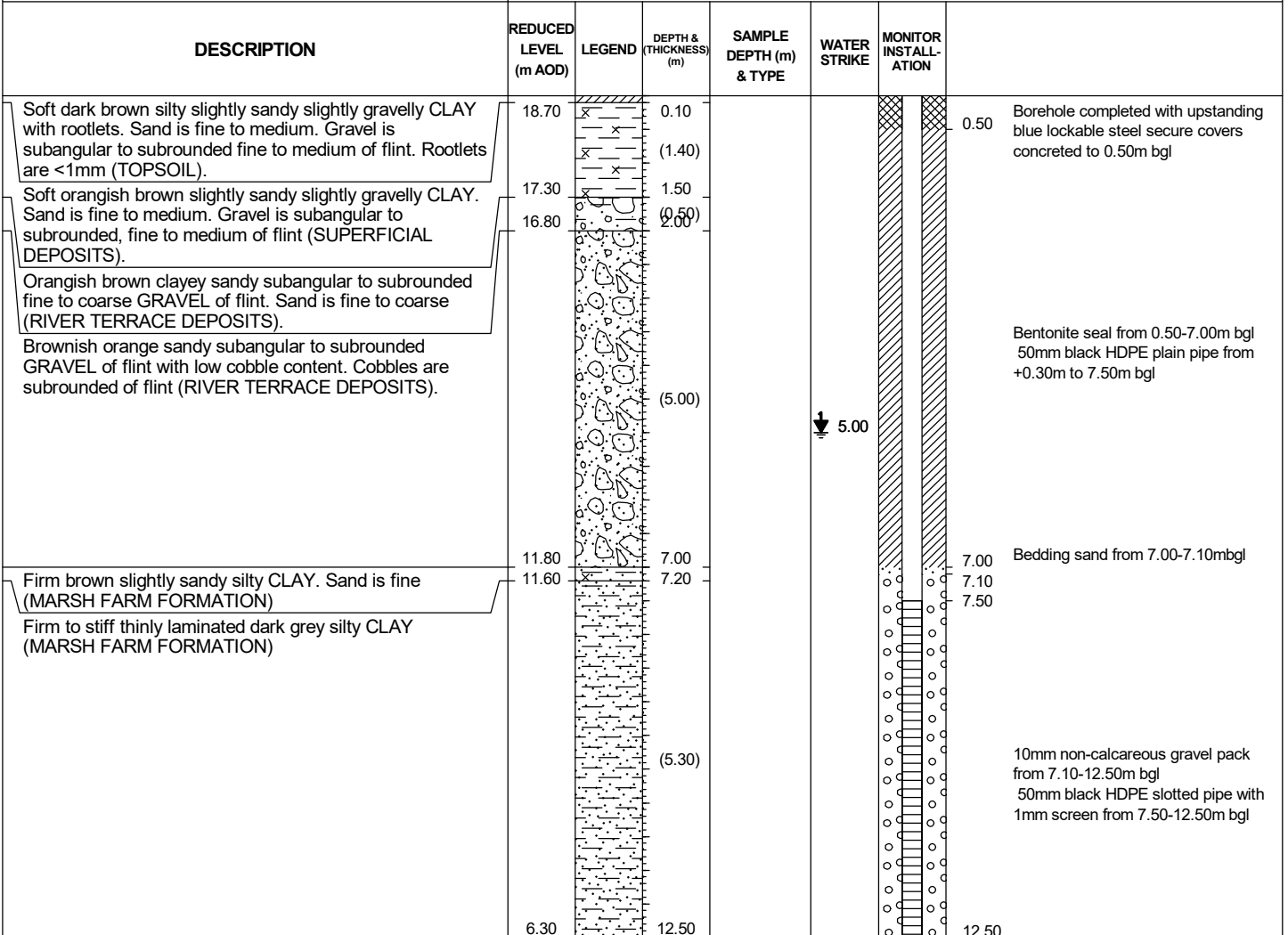
DRILLING CONTRACTOR: Southeastern Drilling Services Ltd.
EQUIPMENT AND METHOD: Dando 4000

SITE REF. SU 4708

GROUND LEVEL
 18.80 m AOD

CO-ORDINATES
 E 447427.05 N 108160.76

DATE DRILLED
START : 22/11/18
FINISH : 23/11/18



| KEY | |
|----------------------------|----------------------|
| B - Bulk disturbed sample | ⬇ - Water strike 1 |
| D - Small disturbed sample | ⬇ - Standing water 1 |
| U - Undisturbed sample | ⬇ - Water strike 2 |
| W - Water sample | ⬇ - Standing water 2 |
| X - Cuttings sample | |
| c - Coarse grained | |
| m - Medium grained | |
| f - Fine grained | |

NOTES

Location cleared by Geotechnics. Hand pitted to 1.2m. Cable percussive drilling in 150mm & cased from GL to 7.20m. 50mm plain pipe from +0.30-7.50 and slotted from 7.50- 12.50m. Bentonite seal from 0.50-7.0 with 100mm bedding sand and gravel filter pack from 7.10-12.50m. GW static at 5.00mbgl.

MONITORING POINT ELEVATION & ID
 Ref. Elev. 18.8mAOD mAOD
 Top Cover 19.102 mAOD

| |
|--------------------------------|
| TOTAL DEPTH 12.50 METRES |
| LOGGED BY P Hird |
| DATE LOGGED 22/11/2018 |
| SCALE 1 : 100 |



SITE NAME
Hamble Airfield
Southampton, Hampshire

SITE REF. SU 4708

DRILLING CONTRACTOR: Southeastern Drilling Services Ltd.
EQUIPMENT AND METHOD: Dando 4000

GROUND LEVEL 22.44 m AOD
CO-ORDINATES E 447649.45 N 108297.56
DATE DRILLED
START : 20/11/18
FINISH : 21/11/18

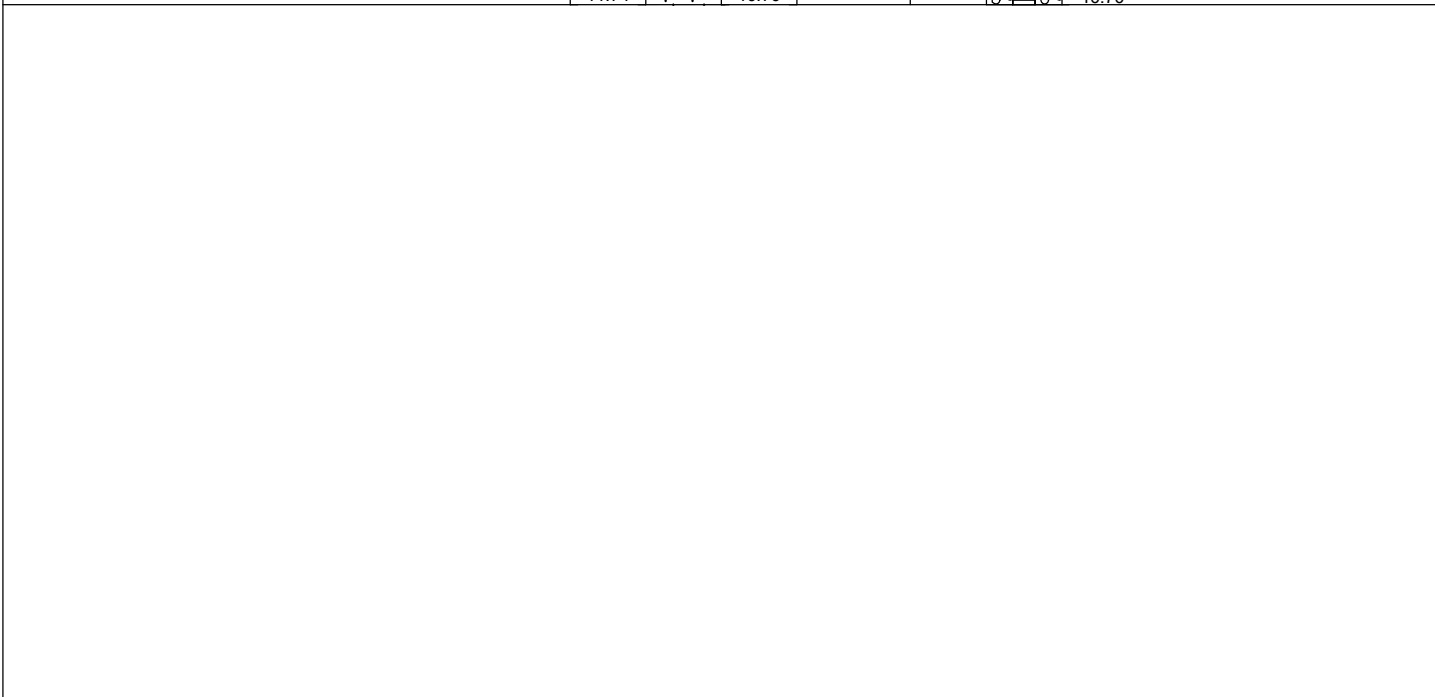
| DESCRIPTION | REDUCED LEVEL (m AOD) | LEGEND | DEPTH & THICKNESS (m) | SAMPLE DEPTH (m) & TYPE | WATER STRIKE | MONITOR INSTALLATION | |
|---|-----------------------|--------|-----------------------|-------------------------|--------------|----------------------|--|
| Soft dark brown silty slightly sandy slightly gravelly CLAY with rootlets. Sand is fine to medium. Gravel is subangular to subrounded fine to medium of flint. Rootlets are <1mm (TOPSOIL). | 22.24 21.84 | | 0.20 0.60 | | | | |
| Soft orangish brown slightly sandy slightly gravelly CLAY. Sand is fine to medium. Gravel is subangular to subrounded, fine to medium of flint (SUPERFICIAL DEPOSITS). | 20.24 | | (1.60) 2.20 | | | | |
| Orangish brown clayey sandy subangular to subrounded fine to coarse GRAVEL of flint. Sand is fine to coarse (RIVER TERRACE DEPOSITS). | | | (3.80) | | | | |
| Yellowish orange slightly gravelly clayey fine to coarse SAND with occasional lenses of orangish grey sandy clay (RIVER TERRACE DEPOSITS) | 16.44 | | 6.00 | | | | |
| Firm to stiff thinly laminated dark grey silty CLAY (MARSH FARM FORMATION) | | | (4.70) | | | | |
| | 11.74 | | 10.70 | | | | |

0.50 Borehole completed with upstanding blue lockable steel secure covers concreted to 0.50m bgl

Bentonite seal from 0.50-6.10m bgl
 50mm blue UPVC plain pipe from +0.30m to 6.70m bgl

6.10 Bedding sand from 6.10-6.20mbgl
 6.20
 6.70

10mm non-calcareous gravel pack from 6.20-10.70m bgl
 50mm blue UPVC slotted pipe with 1mm screen from 6.70-10.70m bgl



| KEY | |
|----------------------------|--|
| B - Bulk disturbed sample | |
| D - Small disturbed sample | |
| U - Undisturbed sample | |
| W - Water sample | |
| X - Cuttings sample | |
| c - Coarse grained | |
| m - Medium grained | |
| f - Fine grained | |

NOTES
 Location cleared by Geotechnics. Hand pitted to 1.2m. Cable percussive drilling in 150mm & cased from GL to 6.00m. 50mm plain pipe from +0.30-6.70 and slotted from 6.70- 10.70m. Bentonite seal from 0.50-6.10 with 100mm bedding sand and gravel filter pack from 6.20-10.70m. GW static at 5.50mbgl.

MONITORING POINT ELEVATION & ID
 Ref. Elev. 22.44mAOD mAOD
 Top Cover 22.718 mAOD

| |
|--------------------------------|
| TOTAL DEPTH 10.70 METRES |
| LOGGED BY P Hird |
| DATE LOGGED 20/11/2018 |
| SCALE 1 : 100 |



SITE NAME
Hamble Airfield
Southampton, Hampshire

SITE REF. SU 4708

DRILLING CONTRACTOR: Southeastern Drilling Services Ltd.
EQUIPMENT AND METHOD: Dando 4000

GROUND LEVEL 21.61 m AOD
CO-ORDINATES E 447878.27 N 108351.57
DATE DRILLED
START : 19/11/18
FINISH : 20/11/18

| DESCRIPTION | REDUCED LEVEL (m AOD) | LEGEND | DEPTH & THICKNESS (m) | SAMPLE DEPTH (m) & TYPE | WATER STRIKE | MONITOR INSTALLATION | |
|---|-----------------------|--------|-----------------------|-------------------------|--------------|----------------------|--|
| Soft dark brown silty slightly sandy slightly gravelly CLAY with rootlets. Sand is fine to medium. Gravel is subangular to subrounded fine to medium of flint. Rootlets are <1mm (TOPSOIL). | 21.41 21.01 | | 0.20 0.60 | | | | |
| Soft orangish brown slightly sandy slightly gravelly CLAY. Sand is fine to medium. Gravel is subangular to subrounded, fine to medium of flint (SUPERFICIAL DEPOSITS). | 19.91 | | (1.10) 1.70 | | | | Borehole completed with upstanding blue lockable steel secure covers concreted to 0.50m bgl |
| Firm orangish brown slightly sandy gravelly CLAY. Sand is fine to coarse. Gravel is subangular to rounded, fine to coarse of flint (RIVER TERRACE DEPOSITS). | 19.01 | | (0.90) 2.60 | | | | Bentonite seal from 0.50-2.60m bgl 50mm blue UPVC plain pipe from +0.30m to 3.70m bgl |
| Brownish orange sandy subangular to subrounded GRAVEL of flint with low cobble content. Cobbles are subrounded of flint (RIVER TERRACE DEPOSITS). | 17.61 | | (1.40) 4.00 | | | | Bedding sand from 2.60-3.70mbgl |
| Brownish grey silty very clayey fine to medium SAND (EARNLEY SAND FORMATION). | | | | | | | |
| Firm to stiff thinly laminated dark grey silty CLAY (MARSH FARM FORMATION) | | | (4.70) 8.70 | | | | 10mm non-calcareous gravel pack from 7.70-8.70m bgl 50mm blue UPVC slotted pipe with 1mm screen from 3.70-8.70m bgl |
| | 12.91 | | 8.70 | | | | 8.70 |

| KEY | |
|----------------------------|--------------------|
| B - Bulk disturbed sample | |
| D - Small disturbed sample | |
| U - Undisturbed sample | |
| W - Water sample | |
| X - Cuttings sample | |
| c - Coarse grained | |
| m - Medium grained | |
| f - Fine grained | |
| | - Water strike 1 |
| | - Standing water 1 |
| | - Water strike 2 |
| | - Standing water 2 |

NOTES

Location cleared by Geotechnics. Hand pitted to 1.2m. Cable percussive drilling in 150mm & cased from GL to 3.00m. 50mm plain pipe from +0.30-3.70 and slotted from 3.70- 8.70m. Bentonite seal from 0.50-2.60 with 100mm bedding sand and gravel filter pack from 2.70-8.70m. No GW strike noted.

MONITORING POINT ELEVATION & ID

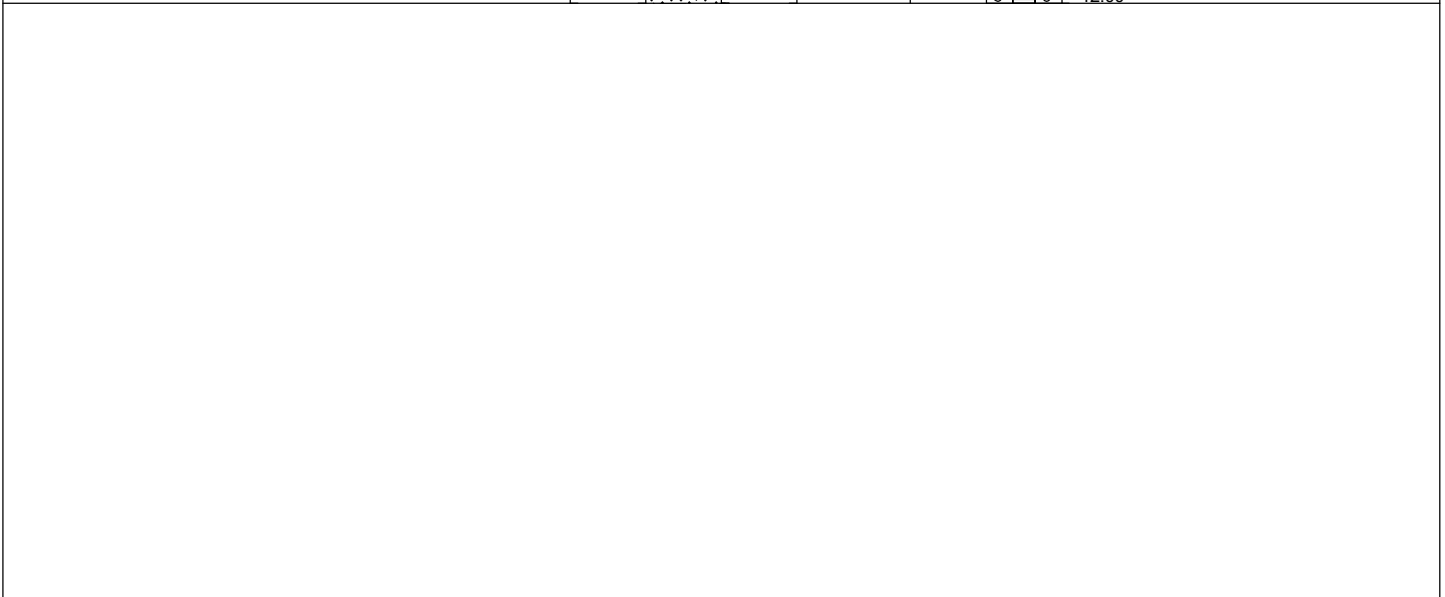
Ref. Elev. 21.61mAOD mAOD
 Top Cover 21.989 mAOD

| |
|-------------------------------|
| TOTAL DEPTH 8.70 METRES |
| LOGGED BY P Hird |
| DATE LOGGED 19/11/2018 |
| SCALE 1 : 100 |



| | | | |
|---|--|--|--|
| SITE NAME Hamble Airfield Southampton, Hampshire | DRILLING CONTRACTOR: Southeastern Drilling Services Ltd. EQUIPMENT AND METHOD: Dando 4000 | | |
| | GROUND LEVEL 20.61 m AOD | CO-ORDINATES E 447509.19 N 107851.10 | DATE DRILLED START : 23/11/18 FINISH : 26/11/18 |
| SITE REF. SU 4708 | | | |

| DESCRIPTION | REDUCED LEVEL (m AOD) | LEGEND | DEPTH & THICKNESS (m) | SAMPLE DEPTH (m) & TYPE | WATER STRIKE | MONITOR INSTALLATION | |
|---|-----------------------|--------|-----------------------|-------------------------|--------------|----------------------|-------|
| Soft dark brown silty slightly sandy slightly gravelly CLAY with rootlets. Sand is fine to medium. Gravel is subangular to subrounded fine to medium of flint. Rootlets are <1mm (TOPSOIL). | 20.31 | | 0.30 | | | | |
| Soft orangish brown slightly sandy slightly gravelly CLAY. Sand is fine to medium. Gravel is subangular to subrounded, fine to medium of flint (SUPERFICIAL DEPOSITS). | 19.11 | | 1.50 | | | | |
| Orangish brown clayey sandy subangular to subrounded fine to coarse GRAVEL of flint. Sand is fine to coarse (RIVER TERRACE DEPOSITS). | 18.61 | | 2.00 | | | | |
| Brownish orange sandy subangular to subrounded GRAVEL of flint with low cobble content. Cobbles are subrounded of flint (RIVER TERRACE DEPOSITS). | 14.11 | | 6.50 | | | | |
| Yellowish orange clayey silty fine to medium SAND (SELSEY SAND FORMATION). | 8.61 | | 12.00 | | | | |
| | | | | | | | 0.50 |
| | | | | | | | 6.50 |
| | | | | | | | 6.60 |
| | | | | | | | 7.00 |
| | | | | | | | 12.00 |



| | | | | |
|--|--|---|--|--|
| KEY B - Bulk disturbed sample D - Small disturbed sample U - Undisturbed sample W - Water sample X - Cuttings sample c - Coarse grained m - Medium grained f - Fine grained | - Water strike 1 - Standing water 1 - Water strike 2 - Standing water 2 | NOTES Location cleared by Geotechnics. Hand pitted to 1.2m. Cable percussive drilling in 150mm & cased from GL to 10.50m. 50mm plain pipe from +0.30-7.00 and slotted from 7.00- 12.00m. Bentonite seal from 0.50-6.50 with 100mm bedding sand and gravel filter pack from 6.60-12.00m. No GW strike noted. | MONITORING POINT ELEVATION & ID Ref. Elev. 20.61mAOD mAOD Top Cover 20.814 mAOD | TOTAL DEPTH 12.00 METRES |
| | | | | LOGGED BY P Hird |
| | | | | DATE LOGGED 23/11/2018 |
| | | | | SCALE 1 : 100 |



SITE NAME
Hamble Airfield
Southampton, Hampshire

DRILLING CONTRACTOR: Southeastern Drilling Services Ltd.
EQUIPMENT AND METHOD: Dando 4000

SITE REF. SU 4708

GROUND LEVEL 19.41 m AOD
CO-ORDINATES E 447972.26 N 107917.16

DATE DRILLED
START : 27/11/18
FINISH : 27/11/18

| DESCRIPTION | REDUCED LEVEL (m AOD) | LEGEND | DEPTH & THICKNESS (m) | SAMPLE DEPTH (m) & TYPE | WATER STRIKE | MONITOR INSTALLATION | |
|---|-----------------------|--------|-----------------------|-------------------------|--------------|----------------------|------|
| Soft dark brown silty slightly sandy slightly gravelly CLAY with rootlets. Sand is fine to medium. Gravel is subangular to subrounded fine to medium of flint. Rootlets are <1mm (TOPSOIL). | 19.11 | | 0.30 | | | | |
| Soft orangish brown silty slightly sandy slightly gravelly CLAY. Sand is fine to medium. Gravel is subangular to subrounded fine to medium of flint (SUPERFICIAL DEPOSITS). | 18.91 | | 0.50 | | | | 0.50 |
| Orangish brown clayey sandy subangular to subrounded fine to coarse GRAVEL of flint. Sand is fine to coarse with lenses of grey fine to medium sand from 2.50m (RIVER TERRACE DEPOSITS). | 16.41 | | 3.00 | | | | 3.00 |
| Yellowish orangish brown clayey silty fine SAND (SELSEY SAND FORMATION). | | | (5.50) | | | | 3.10 |
| | | | | | | | 3.50 |
| | | | | | | | 8.50 |
| | 10.91 | | 8.50 | | | | 8.50 |

Borehole completed with upstanding blue lockable steel secure covers concreted to 0.50m bgl

Bentonite seal from 0.50-3.00m bgl
 50mm blue UPVC plain pipe from +0.30m to 3.50m bgl

Bedding sand from 3.00-3.10mbgl

10mm non-calcareous gravel pack from 3.10-8.50m bgl
 50mm blue UPVC slotted pipe with 1mm screen and 600 micron filter sock from 3.50-8.50m bgl

| KEY | |
|----------------------------|--------------------|
| B - Bulk disturbed sample | - Water strike 1 |
| D - Small disturbed sample | - Standing water 1 |
| U - Undisturbed sample | - Water strike 2 |
| W - Water sample | - Standing water 2 |
| X - Cuttings sample | |
| c - Coarse grained | |
| m - Medium grained | |
| f - Fine grained | |

NOTES

Location cleared by Geotechnics. Hand pitted to 1.2m. Cable percussive drilling in 150mm & cased from GL to 7.50m. 50mm plain pipe from +0.30-3.50 and slotted from 3.50- 8.50m. Bentonite seal from 0.50-3.00 with 100mm bedding sand and gravel filter pack from 3.00-8.50m. No GW strike noted.

MONITORING POINT ELEVATION & ID
 Ref. Elev. 19.41mAOD mAOD
 Top Cover 19.771 mAOD

| | |
|-------------|------------|
| TOTAL DEPTH | 8.50 |
| METRES | |
| LOGGED BY | P Hird |
| DATE LOGGED | 27/11/2018 |
| SCALE | 1 : 100 |



SITE NAME
Hamble Airfield
Southampton, Hampshire

SITE REF. SU 4708

DRILLING CONTRACTOR: Southeastern Drilling Services Ltd.
EQUIPMENT AND METHOD: Dando 4000

GROUND LEVEL 20.02 m AOD
CO-ORDINATES E 447588.11 N 107536.47
DATE DRILLED
START : 26/11/18
FINISH : 27/11/18

| DESCRIPTION | REDUCED LEVEL (m AOD) | LEGEND | DEPTH & THICKNESS (m) | SAMPLE DEPTH (m) & TYPE | WATER STRIKE | MONITOR INSTALLATION | |
|---|-----------------------|--------|-----------------------|-------------------------|--------------|----------------------|---|
| Soft dark brown silty slightly sandy slightly gravelly CLAY with rootlets. Sand is fine to medium. Gravel is subangular to subrounded fine to medium of flint. Rootlets are <1mm (TOPSOIL). | 19.72 | | 0.30 (1.10) | | | | 0.50 |
| Soft orangish brown silty slightly sandy slightly gravelly CLAY. Sand is fine to medium. Gravel is subangular to subrounded fine to medium of flint (SUPERFICIAL DEPOSITS). | 18.62 | | 1.40 (1.30) | | | | |
| Orangish brown clayey sandy subangular to subrounded fine to coarse GRAVEL of flint. Sand is fine to coarse. (RIVER TERRACE DEPOSITS). | 17.32 | | 2.70 (3.00) | | | | Bentonite seal from 0.50-5.70m bgl 50mm blue UPVC plain pipe from +0.30m to 6.20m bgl |
| Brownish orange sandy subangular to subrounded GRAVEL of flint with low cobble content. Cobbles are subrounded of flint (RIVER TERRACE DEPOSITS). | 14.32 | | 5.70 (5.50) | | | | Bedding sand from 5.70-5.80mbgl |
| Brownish yellowish orange silty slightly clayey fine SAND (SELSEY SAND FORMATION). | 8.82 | | 11.20 | | | | 10mm non-calcareous gravel pack from 5.80-11.20m bgl 50mm blue UPVC slotted pipe with 1mm screen and 600 micron filter sock from 6.20-11.20m bgl |

| KEY | |
|----------------------------|--|
| B - Bulk disturbed sample | |
| D - Small disturbed sample | |
| U - Undisturbed sample | |
| W - Water sample | |
| X - Cuttings sample | |
| c - Coarse grained | |
| m - Medium grained | |
| f - Fine grained | |

NOTES

Location cleared by Geotechnics. Hand pitted to 1.2m. Cable percussive drilling in 150mm & cased from GL to 9.00m. 50mm plain pipe from +0.30-6.20 and slotted from 6.20- 11.20m. Bentonite seal from 0.50-5.70 with 100mm bedding sand and gravel filter pack from 5.80-11.20m. No GW strike noted.

MONITORING POINT ELEVATION & ID

Ref. Elev. 20.02mAOD mAOD
 Top Cover 20.337 mAOD

| |
|--------------------------------|
| TOTAL DEPTH 11.20 METRES |
| LOGGED BY P Hird |
| DATE LOGGED 26/11/2018 |
| SCALE 1 : 100 |



| | | |
|---|--|--|
| SITE NAME Hamble Airfield Southampton, Hampshire | DRILLING CONTRACTOR: Southeastern Drilling Services Ltd. EQUIPMENT AND METHOD: Dando 4000 | |
| | GROUND LEVEL 16.50 m AOD | CO-ORDINATES E 448087.49 N 107645.84 |
| SITE REF. SU 4708 | DATE DRILLED START : 27/11/18 FINISH : 28/11/18 | |

| DESCRIPTION | REDUCED LEVEL (m AOD) | LEGEND | DEPTH & THICKNESS (m) | SAMPLE DEPTH (m) & TYPE | WATER STRIKE | MONITOR INSTALLATION | |
|---|-----------------------|--------|-----------------------|-------------------------|--------------|----------------------|---|
| Soft dark brown silty slightly sandy slightly gravelly CLAY with rootlets. Sand is fine to medium. Gravel is subangular to subrounded fine to medium of flint. Rootlets are <1mm (TOPSOIL). | 16.30 | | 0.20 | | | | |
| Soft orangish brown slightly sandy very gravelly CLAY. Sand is fine to medium. Gravel is subangular to subrounded, fine to medium of flint (SUPERFICIAL DEPOSITS). | 16.00 | | 0.50 | | | | |
| Brownish orange sandy subangular to subrounded GRAVEL of flint with low cobble content. Cobbles are subrounded of flint (RIVER TERRACE DEPOSITS). | 15.00 | | 1.50 | | | | |
| Brownish orange slightly clayey fine to medium SAND (RIVER TERRACE DEPOSITS). | 14.00 | | 2.50 | | | | |
| Brownish orange sandy subangular to subrounded GRAVEL of flint with low cobble content. Cobbles are subrounded of flint (RIVER TERRACE DEPOSITS). | 11.80 | | 4.70 | | | | |
| Yellowish orange clayey silty fine to medium SAND (SELSEY SAND FORMATION). | | | (5.50) | | | | |
| | 6.30 | | 10.20 | | | | |
| | | | | | | | Borehole completed with upstanding blue lockable steel secure covers concreted to 0.50m bgl Bentonite seal from 0.50-4.70m bgl 50mm blue UPVC plain pipe from +0.30m to 5.20m bgl Bedding sand from 4.70-4.80mbgl 4.70 4.80 5.20 10mm non-calcareous gravel pack from 4.80-10.20m bgl 50mm blue UPVC slotted pipe with 1mm screen and 600 micron filter sock from 5.20-10.20m bgl |

| | | | |
|--|--|---|--|
| KEY B - Bulk disturbed sample D - Small disturbed sample U - Undisturbed sample W - Water sample X - Cuttings sample c - Coarse grained m - Medium grained f - Fine grained - Water strike 1 - Standing water 1 - Water strike 2 - Standing water 2 | NOTES Location cleared by Geotechnics. Hand pitted to 1.2m. Cable percussive drilling in 150mm & cased from GL to 9.00m. 50mm plain pipe from +0.30-5.20 and slotted from 5.20- 10.20m. Bentonite seal from 0.50-4.70 with 100mm bedding sand and gravel filter pack from 4.80-10.20m. No GW strike noted. | MONITORING POINT ELEVATION & ID Ref. Elev. 16.5mAOD mAOD Top Cover 16.913 mAOD | TOTAL DEPTH 10.20 METRES |
| | | | LOGGED BY P Hird |
| | | | DATE LOGGED 27/11/2018 |
| | | | SCALE 1 : 100 |



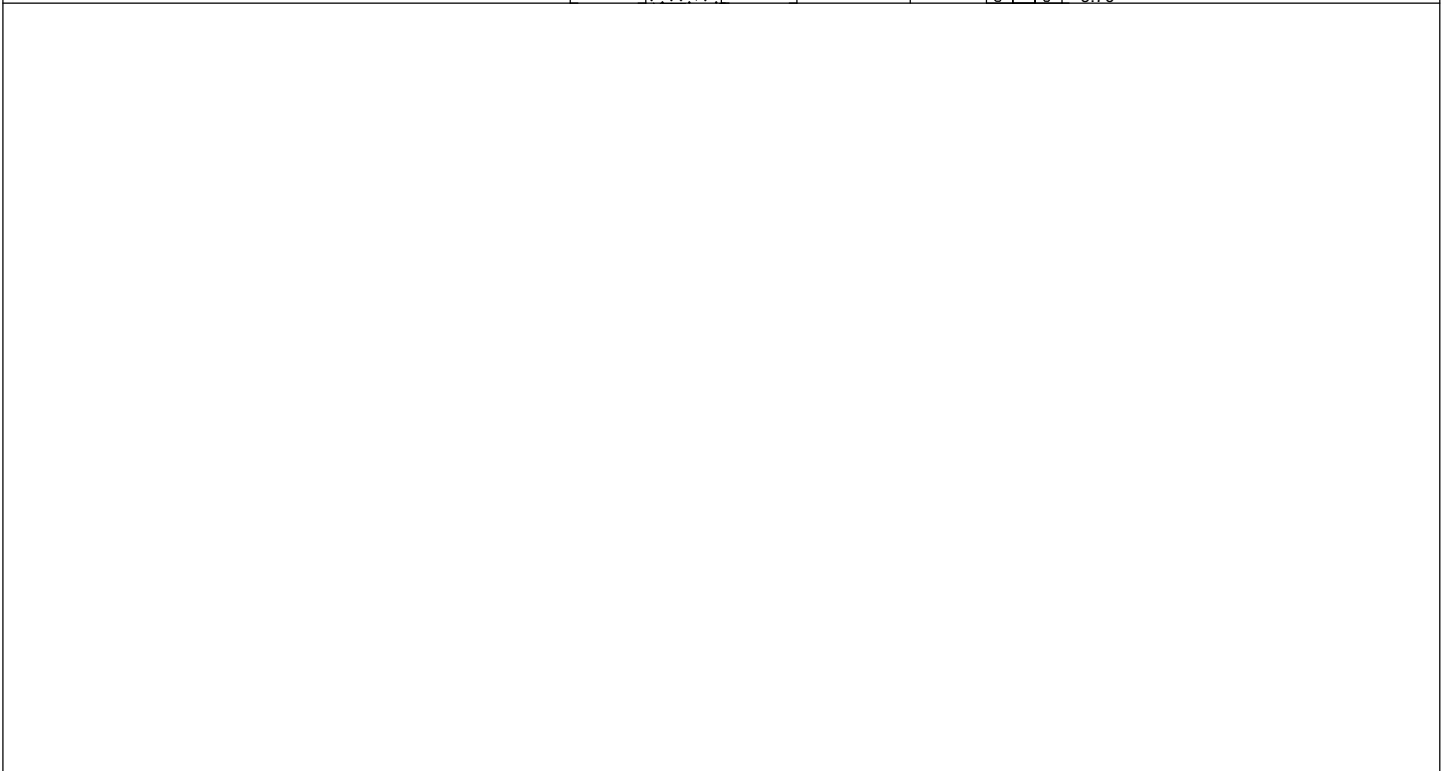
SITE NAME
Hamble Airfield
Southampton, Hampshire

SITE REF. SU 4708

DRILLING CONTRACTOR: Southeastern Drilling Services Ltd.
EQUIPMENT AND METHOD: Dando 4000

GROUND LEVEL 16.66 m AOD
CO-ORDINATES E 448106.55 N 107322.46
DATE DRILLED
START : 28/11/18
FINISH : 29/11/18

| DESCRIPTION | REDUCED LEVEL (m AOD) | LEGEND | DEPTH & THICKNESS (m) | SAMPLE DEPTH (m) & TYPE | WATER STRIKE | MONITOR INSTALLATION | |
|--|-----------------------|--------|-----------------------|-------------------------|--------------|----------------------|------|
| Soft dark brown silty slightly sandy slightly gravelly CLAY with rootlets. Sand is fine to medium. Gravel is subangular to subrounded fine to medium of flint and brick. Rootlets are <1mm (REWORKED TOPSOIL). | 16.46 | | 0.20 | | | | |
| | 15.96 | | (0.50) | | | | 0.50 |
| | 15.66 | | 1.00 | | | | |
| Soft orangish brown slightly sandy gravelly CLAY. Sand is fine to medium. Gravel is subangular to subrounded, fine to medium of flint (SUPERFICIAL DEPOSITS). | 15.16 | | (0.50) | | | | |
| Orangish brown clayey sandy subangular to subrounded fine to coarse GRAVEL of flint. Sand is fine to coarse (RIVER TERRACE DEPOSITS). | | | (2.70) | | | | |
| Greenish grey fine to medium SAND (RIVER TERRACE DEPOSITS). | | | | | | | |
| Brownish orange sandy subangular to subrounded GRAVEL of flint with low cobble content. Cobbles are subrounded of flint (RIVER TERRACE DEPOSITS). | 12.46 | | 4.20 | | | | 4.20 |
| | | | | | | | 4.30 |
| | | | | | | | 4.70 |
| Yellowish orange clayey silty fine to medium SAND. Occasional orangish grey sandy silty clay lenses (SELSEY SAND FORMATION). | | | (5.50) | | | | |
| | 6.96 | | 9.70 | | | | 9.70 |



| | | | |
|--|---|--|-------------------------|
| <p>KEY</p> <ul style="list-style-type: none"> B - Bulk disturbed sample D - Small disturbed sample U - Undisturbed sample W - Water sample X - Cuttings sample c - Coarse grained m - Medium grained f - Fine grained | <p>NOTES</p> <p>Location cleared by Geotechnics. Hand pitted to 1.2m. Cable percussive drilling in 150mm & cased from GL to 9.00m. 50mm plain pipe from +0.30-4.70 and slotted from 4.70- 9.70m. Bentonite seal from 0.50-4.20 with 100mm bedding sand and gravel filter pack from 4.30-9.70m. No GW strike noted.</p> | <p>MONITORING POINT ELEVATION & ID</p> <p>Ref. Elev. 16.66mAOD mAOD Top Cover 16.999 mAOD</p> | TOTAL DEPTH 9.70 METRES |
| | | | LOGGED BY P Hird |
| | | | DATE LOGGED 28/11/2018 |
| | | | SCALE 1 : 100 |



| | | | |
|---|--|--|---|
| SITE NAME Hamble Airfield Southampton, Hampshire | DRILLING CONTRACTOR: Southeastern Drilling Services Ltd. EQUIPMENT AND METHOD: Dando 4000 | | |
| | GROUND LEVEL 20.12 m AOD | CO-ORDINATES E 447876.81 N 107318.46 | DATE DRILLED START : 29/11/18 FINISH : 3/12/18 |
| SITE REF. SU 4708 | | | |

| DESCRIPTION | REDUCED LEVEL (m AOD) | LEGEND | DEPTH & THICKNESS (m) | SAMPLE DEPTH (m) & TYPE | WATER STRIKE | MONITOR INSTALLATION | |
|---|-----------------------|--------|-----------------------|-------------------------|--------------|----------------------|-------|
| Soft dark brown silty slightly sandy slightly gravelly CLAY with rootlets. Sand is fine to medium. Gravel is subangular to subrounded fine to medium of flint. Rootlets are <1mm (TOPSOIL). | 20.02 | | 0.10 (1.40) | | | | 0.50 |
| Soft orangish brown slightly sandy slightly CLAY. Sand is fine to medium (SUPERFICIAL DEPOSITS). | 18.62 18.32 | | 1.50 1.80 | | | | |
| Soft brownish orange slightly sandy slightly gravelly CLAY. Sand is fine to medium. Gravel is subangular to subrounded, fine to medium of flint (RIVER TERRACE DEPOSITS). | | | (4.40) | | | | |
| Brownish orange sandy subangular to subrounded GRAVEL of flint with low cobble content. Cobbles are subrounded of flint (RIVER TERRACE DEPOSITS). | | | (4.40) | | | | |
| Yellowish orange clayey silty fine to medium SAND. Occasional orangish grey sandy silty clay lenses (SELSEY SAND FORMATION). | 13.92 | | 6.20 (5.50) | | | | 6.20 |
| | | | | | | | 6.30 |
| | | | | | | | 6.70 |
| | 8.42 | | 11.70 | | | | 11.70 |

| | | | | | | | |
|--|--|--|--|--|--|--|--|
| | | | | | | | |
|--|--|--|--|--|--|--|--|

| | | | | |
|--|--|--|--|--|
| KEY B - Bulk disturbed sample D - Small disturbed sample U - Undisturbed sample W - Water sample X - Cuttings sample c - Coarse grained m - Medium grained f - Fine grained | - Water strike 1 - Standing water 1 - Water strike 2 - Standing water 2 | NOTES Location cleared by Geotechnics. Hand pitted to 1.2m. Cable percussive drilling in 150mm & cased from GL to 9.00m. 50mm plain pipe from +0.30-6.70 and slotted from 6.70- 11.70m. Bentonite seal from 0.50-6.20 with 100mm bedding sand and gravel filter pack from 6.30-11.70m. No GW strike noted. | MONITORING POINT ELEVATION & ID Ref. Elev. 20.12mAOD mAOD Top Cover 20.374 mAOD | TOTAL DEPTH 11.70 METRES |
| | | | | LOGGED BY P Hird |
| | | | | DATE LOGGED 29/11/2018 |
| | | | | SCALE 1 : 100 |



| | | | | | | |
|---|--|---|---------------------|---------------------|-------------|-------------------------|
| SITE NAME Hamble Airfield Southampton, Hampshire SITE REF. SU 4708 | DRILLING CONTRACTOR: Southeastern Drilling Services Ltd. EQUIPMENT AND METHOD: Dando 4000 | | | | | |
| | <table border="0"> <tr> <td>GROUND LEVEL</td> <td>CO-ORDINATES</td> <td>DATE DRILLED</td> </tr> <tr> <td>22.44 m AOD</td> <td>E 447645.82 N 108293.54</td> <td>START : 21/11/18 FINISH : 21/11/18</td> </tr> </table> | GROUND LEVEL | CO-ORDINATES | DATE DRILLED | 22.44 m AOD | E 447645.82 N 108293.54 |
| GROUND LEVEL | CO-ORDINATES | DATE DRILLED | | | | |
| 22.44 m AOD | E 447645.82 N 108293.54 | START : 21/11/18 FINISH : 21/11/18 | | | | |

| DESCRIPTION | REDUCED LEVEL (m AOD) | LEGEND | DEPTH & THICKNESS (m) | SAMPLE DEPTH (m) & TYPE | WATER STRIKE | MONITOR INSTALLATION | |
|---|-----------------------|--------|-----------------------|-------------------------|--------------|----------------------|------|
| Soft dark brown silty slightly sandy slightly gravelly CLAY with rootlets. Sand is fine to medium. Gravel is subangular to subrounded fine to medium of flint. Rootlets are <1mm (TOPSOIL). | 22.24 | | 0.20 | | | | |
| | 21.84 | | 0.60 | | | | 0.50 |
| | 21.44 | | 1.00 | | | | |
| Soft orangish brown slightly sandy slightly gravelly CLAY. Sand is fine to medium. Gravel is subangular to subrounded, fine to medium of flint (SUPERFICIAL DEPOSITS). | | | (2.10) | | | | 1.40 |
| | | | | | | | 1.50 |
| | | | | | | | 1.70 |
| Soft brownish orange slightly sandy gravelly CLAY. Sand is fine to medium. Gravel is subangular to subrounded, fine to medium of flint (RIVER TERRACE DEPOSITS). | 19.34 | | 3.10 | | | | |
| Orangish brown sandy subangular to subrounded fine to coarse GRAVEL of flint. Sand is fine to coarse (RIVER TERRACE DEPOSITS). | | | (3.10) | | | | |
| Yellowish orange slightly clayey fine to medium SAND (RIVER TERRACE DEPOSITS) | | | | | | | |
| | 16.24 | | 6.20 | | | | |
| Firm to stiff thinly laminated dark grey silty CLAY (MARSH FARM FORMATION) | 15.74 | | (0.50) 6.70 | | | | 6.70 |

Borehole completed with upstanding blue lockable steel secure covers concreted to 0.50m bgl
 Bentonite seal from 0.50-1.60m bgl
 50mm blue UPVC plain pipe from +0.30m to 1.70m bgl
 Bedding sand from 1.60-1.70mbgl

 10mm non-calcareous gravel pack from 1.70-6.70m bgl
 50mm blue UPVC slotted pipe with 1.5mm screen from 1.70-6.70m bgl

| | | | |
|--|--|--|---|
| KEY B - Bulk disturbed sample D - Small disturbed sample U - Undisturbed sample W - Water sample X - Cuttings sample c - Coarse grained m - Medium grained f - Fine grained - Water strike 1 - Standing water 1 - Water strike 2 - Standing water 2 | NOTES Location cleared by Geotechnics. Hand pitted to 1.2m. Cable percussive drilling in 150mm & cased from GL to 6.00m. 50mm plain pipe from +0.30-1.70 and slotted from 1.70- 6.70m. Bentonite seal from 0.50-1.60 with 100mm bedding sand and gravel filter pack from 1.70-6.70m. No GW strike noted. | MONITORING POINT ELEVATION & ID Ref. Elev. 22.44mAOD mAOD Top Cover 22.787 mAOD | TOTAL DEPTH 6.70 METRES |
| | | | LOGGED BY P Hird |
| | | | DATE LOGGED 21/11/2018 |
| | | | SCALE 1 : 100 |



| | | | |
|---|--|--|--|
| SITE NAME Hamble Airfield Southampton, Hampshire | DRILLING CONTRACTOR: EQUIPMENT AND METHOD: Dando 2000 | | |
| | GROUND LEVEL 19.96 m AOD | CO-ORDINATES E 447589.13 N 107536.46 | DATE DRILLED START : 25/2/19 FINISH : 25/2/19 |
| SITE REF. SU 4708 | | | |

| DESCRIPTION | REDUCED LEVEL (m AOD) | LEGEND | DEPTH & THICKNESS (m) | SAMPLE DEPTH (m) & TYPE | WATER STRIKE | MONITOR INSTALLATION | |
|---|-----------------------|--------|-----------------------|-------------------------|--------------|----------------------|------|
| Soft dark brown silty slightly sandy slightly gravelly CLAY with rootlets. Sand is fine to medium. Gravel is subangular to subrounded fine to medium of flint. Rootlets are <1mm (TOPSOIL). | 19.56 | | 0.40 | | | | 0.50 |
| Soft orangish brown silty slightly sandy slightly gravelly CLAY. Sand is fine to medium. Gravel is subangular to subrounded fine to medium of flint (SUPERFICIAL DEPOSITS). | 18.86 | | (0.70) | | | | |
| | 18.46 | | 1.50 | | | | 1.40 |
| Firm orangish brown slightly sandy very gravelly CLAY. Sand is fine to coarse. Gravel is subangular to subrounded, fine to coarse of flint (RIVER TERRACE DEPOSITS). | | | (3.50) | | | | 1.50 |
| Orangish brown sandy subangular to subrounded fine to coarse GRAVEL of flint with some cobbles. Sand is fine to coarse. Cobbles are subrounded of flint (RIVER TERRACE DEPOSITS). | 14.96 | | 5.00 | | | | 1.70 |
| Firm greyish brownish orange sandy very gravelly CLAY. Sand is fine to medium. Gravel is subangular to subrounded fine to medium of flint (RIVER TERRACE DEPOSITS). | 14.56 | | 5.40 | | | | |
| Brownish yellowish orange silty slightly clayey fine SAND (SELSEY SAND FORMATION). | 12.96 | | (1.60) | | | | 6.00 |
| | | | 7.00 | | | | 7.00 |

Borehole completed with upstanding blue lockable steel secure covers concreted to 0.50m bgl
 Bentonite seal from 0.50-1.60m bgl
 50mm yellow UPVC plain pipe from +0.30m to 1.70m bgl
 Bedding sand from 1.60-1.70mbgl

10mm non-calcareous gravel pack from 1.70-6.70m bgl
 50mm yellow UPVC slotted pipe with 2mm screen from 1.70-6.0m bgl

| | | | | |
|--|--|--|---|---|
| KEY B - Bulk disturbed sample D - Small disturbed sample U - Undisturbed sample W - Water sample X - Cuttings sample c - Coarse grained m - Medium grained f - Fine grained | - Water strike 1 - Standing water 1 - Water strike 2 - Standing water 2 | NOTES Location cleared by Geotechnics. Hand pitted to 1.2m. Cable percussive drilling in 150mm & cased from GL to 7.00m. 50mm plain pipe from +0.30-1.70 and slotted from 1.70- 6.00m. Bentonite seal from 0.50-1.60 with 100mm bedding sand and gravel filter pack from 1.70-6.00m. No GW strike noted. | MONITORING POINT ELEVATION & ID Ref. Elev. 20.34mAOD mAOD Top Cover 20.34 mAOD | TOTAL DEPTH 7.00 METRES |
| | | | | LOGGED BY P Hird |
| | | | | DATE LOGGED 25/02/2019 |
| | | | | SCALE 1 : 100 |



| | | | | | | |
|---|--|---|---------------------|---------------------|-------------|-------------------------|
| SITE NAME Hamble Airfield Southampton, Hampshire SITE REF. SU 4708 | DRILLING CONTRACTOR: Southeastern Drilling Services Ltd. EQUIPMENT AND METHOD: Dando 4000 | | | | | |
| | <table border="0"> <tr> <td>GROUND LEVEL</td> <td>CO-ORDINATES</td> <td>DATE DRILLED</td> </tr> <tr> <td>16.33 m AOD</td> <td>E 448112.03 N 107321.30</td> <td>START : 29/11/18 FINISH : 29/11/18</td> </tr> </table> | GROUND LEVEL | CO-ORDINATES | DATE DRILLED | 16.33 m AOD | E 448112.03 N 107321.30 |
| GROUND LEVEL | CO-ORDINATES | DATE DRILLED | | | | |
| 16.33 m AOD | E 448112.03 N 107321.30 | START : 29/11/18 FINISH : 29/11/18 | | | | |

| DESCRIPTION | REDUCED LEVEL (m AOD) | LEGEND | DEPTH & THICKNESS (m) | SAMPLE DEPTH (m) & TYPE | WATER STRIKE | MONITOR INSTALLATION | |
|---|-----------------------|--------|-----------------------|-------------------------|--------------|----------------------|----------------------|
| Soft dark brown silty slightly sandy slightly gravelly CLAY with rootlets. Sand is fine to medium. Gravel is subangular to subrounded fine to medium of flint and brick. Rootlets are <1mm (TOPSOIL). | 16.03 | | 0.30 | | | | |
| Orangish brown clayey sandy subangular to subrounded fine to coarse GRAVEL of flint. Sand is fine to coarse (SUPERFICIAL DEPOSITS). | 15.63 | | 0.70 | | | | 0.50 |
| Greenish Grey fine to medium SAND (RIVER TERRACE DEPOSITS). | 15.33 | | 1.00 | | | | |
| Brownish orange sandy subangular to subrounded GRAVEL of flint with low cobble content. Cobbles are subrounded of flint (RIVER TERRACE DEPOSITS). | 12.33 | | (3.00) | | | | 1.50 1.60 1.70 |
| Yellowish orange clayey silty fine to medium SAND. Occasional orangish grey sandy silty clay lenses (SELSEY SAND FORMATION). | 11.83 | | 4.50 | | | | 4.50 |

| | | | |
|--|--|--|--|
| | | | |
|--|--|--|--|

| | | | |
|--|--|--|---|
| KEY B - Bulk disturbed sample D - Small disturbed sample U - Undisturbed sample W - Water sample X - Cuttings sample c - Coarse grained m - Medium grained f - Fine grained - Water strike 1 - Standing water 1 - Water strike 2 - Standing water 2 | NOTES Location cleared by Geotechnics. Hand pitted to 1.2m. Cable percussive drilling in 150mm & cased from GL to 4.00m. 50mm plain pipe from +0.30-1.70 and slotted from 1.70- 4.50m. Bentonite seal from 0.50-1.50 with 100mm bedding sand and gravel filter pack from 1.60-4.50m. No GW strike noted. | MONITORING POINT ELEVATION & ID Ref. Elev. 16.33mAOD mAOD Top Cover 16.706 mAOD | TOTAL DEPTH 4.50 METRES |
| | | | LOGGED BY P Hird |
| | | | DATE LOGGED 29/11/2018 |
| | | | SCALE 1 : 100 |

*SU40NE/13/14

315/119 Formerly Air Service Training Ltd., Hamble.

SU40NE/14 (a) (Disused). Surface + 56. Lining tubes: 34 x 12in from $\frac{1}{2}$ down; 367 $\frac{1}{2}$ x 10 in from $\frac{1}{2}$ down; 27 x 8 in from 366 $\frac{1}{2}$ down (perforated); 28 $\frac{1}{2}$ x 6in from 337 $\frac{1}{2}$ down (perforated). R.W.L. +37 $\frac{1}{2}$. P.W.L. -25. Yield 9,380 g.p.h. (test). Hardness: P. 25, T. 110. Anal. Inler, Oct. 1934.
Yield 7,000 g.p.h. Mar. 1941.

SU40NE/13 (b) Surface + 57. Bore 396. Lining tubes: 376 x 12 in from $\frac{1}{2}$ above; 79 x 8 in from 317 down (20 $\frac{1}{2}$ perforated with sand screen). R.W.L. + 36. P.W.L. -73. Suction -226. Yield 8,089 g.p.h. (5d. test). Inler, Apr. 1949.
Air lift. Hardness: NC. O, C. 135. Anal. Dec. 1949. R.W.L. + 29. P.W.L. - 38. Yield 4,800 g.p.h. Oct. 1950. R.W.L. + 31. P.W.L. -38. Yield 4,600 g.p.h. Oct. 1956. R.W.L. + 38. P.W.L. -51. Yield 6,800 g.p.h. Oct. 1961.

SU40NE/14/4771 06965

109.

| | | |
|----------|-----|-----|
| (a) Made | 2 | 2 |
| Drift | 9 | 11 |
| BrB | 339 | 350 |
| Bg | 43 | 393 |
| LC | 2 | 395 |

| Geol. classn. | Nature of strata | Thickness ft | Depth ft |
|---------------|---------------------|--------------|----------|
| (a) Made | Made ground | 2 | 2 |
| Drift | Sky ballast | 9 | 11 |
| | Yellow clay | 5 | 16 |
| | Blue clay | 30 | 46 |
| | Grey sand | 73 | 119 |
| BrB | Clay | 36 | 155 |
| 339 | Green sandy clay | 14 | 169 |
| | Clayey sand | 18 | 187 |
| | Green sand & shells | 19 | 206 |
| | Sand & clay | 144 | 350 |
| Bg | Sandy clay & stone | 29 | 379 |
| 43 | Sand & pebbles | 14 | 393 |
| LC | Clay | 2 | 395 |

PP
L P Thomas
25/11/69

BH 1

23-28-1-86

150 mm dia.

Gravelly TOPSOIL with some brick fragments overlying grey and brown clayey fine SAND with some gravel and a few small roots. FILL.

soft

loose

Brown and grey clayey fine SAND or firm very fine sandy CLAY. Easily disturbed into a soft cohesive slurry. Possibly medium dense in situ. Organic inclusions at top of stratum. Thinly laminated structure 6 to 8.5 m depth. (Bracklesham Beds)

Firm or compact dark grey friable fine sandy CLAY and clayey fine SAND. Thinly laminated structure in places. Easily disturbed into a very soft clay/fine sand mixture. (Bracklesham Beds)

apparently

No water encountered during boring down to 4 m. Water level readings during subsequent boring given below:

| Date | Time | Hole depth (m) | Casing depth (m) | Water level (m) |
|------|-------|----------------|------------------|-----------------|
| 23/1 | 16.50 | 4.0 | 4.0 | 3.6 |
| 24/1 | 09.00 | 4.0 | 4.0 | 2.8 |
| | 12.15 | 8.5 | 8.0 | 4.6 |
| | 13.15 | 8.5 | 8.0 | 4.6 |
| 27/1 | 09.15 | 11.0 | 11.0 | 3.1 |
| | 11.30 | 12.5 | 12.5 | 8.7 |
| 28/1 | 09.00 | 12.5 | 12.5 | 3.6 |

O.D. S.D.
+3.28 103.28
+2.86
263.86

2.00 +1.28 101.28

+0.18 100.18

09.15 27.1.86
slightly tidal?

N=18

N=21

N=22

N=24

9.10 -5.82 94.18

N/R.

N=36

N=34

N=35

15.00 -11.72 88.28

Standpipe installed to 6 m depth perforated over bottom 4 m. 100 mm dia. tube and screw cap cover fitted at surface.

Standpipe monitored over 72-h period of Spring Tides March 15 and 17, 1986. See Table 5

Scale: 1:100

BH 2

29-1-3-2-86

150 mm dia

| O. D. | S. D. |
|-------|--------|
| +8.90 | 108.90 |

Dark brown clayey TOPSOIL
overlying brown clayey sandy
GRAVEL and dense highly
permeable sandy GRAVEL.
(Very difficult slow
boring.)

N=39

N=45

N=41

| | | |
|------|-------|--------|
| 3.60 | +5.30 | 105.30 |
|------|-------|--------|

N=29

Firm grey-brown mottled fine
sandy CLAY and compact clayey
fine SAND with occasional
thin laminations of clay.
(Bracklesham Beds)

| | | |
|------|-------|--------|
| 5.60 | +3.30 | 103.30 |
|------|-------|--------|

Compact grey-orange-brown
clayey fine SAND and very
silty fine SAND.
(Bracklesham Beds)

N=29

| | | |
|-------|-------|-------|
| 10.00 | -1.10 | 98.90 |
|-------|-------|-------|

N=41

No water apparently encountered during boring. Water added for progressing the borehole. Large quantities required for boring through the gravel stratum 0.8 to 3.6 m depth.

Casing depth not reported.

Depth to water table not ascertained.