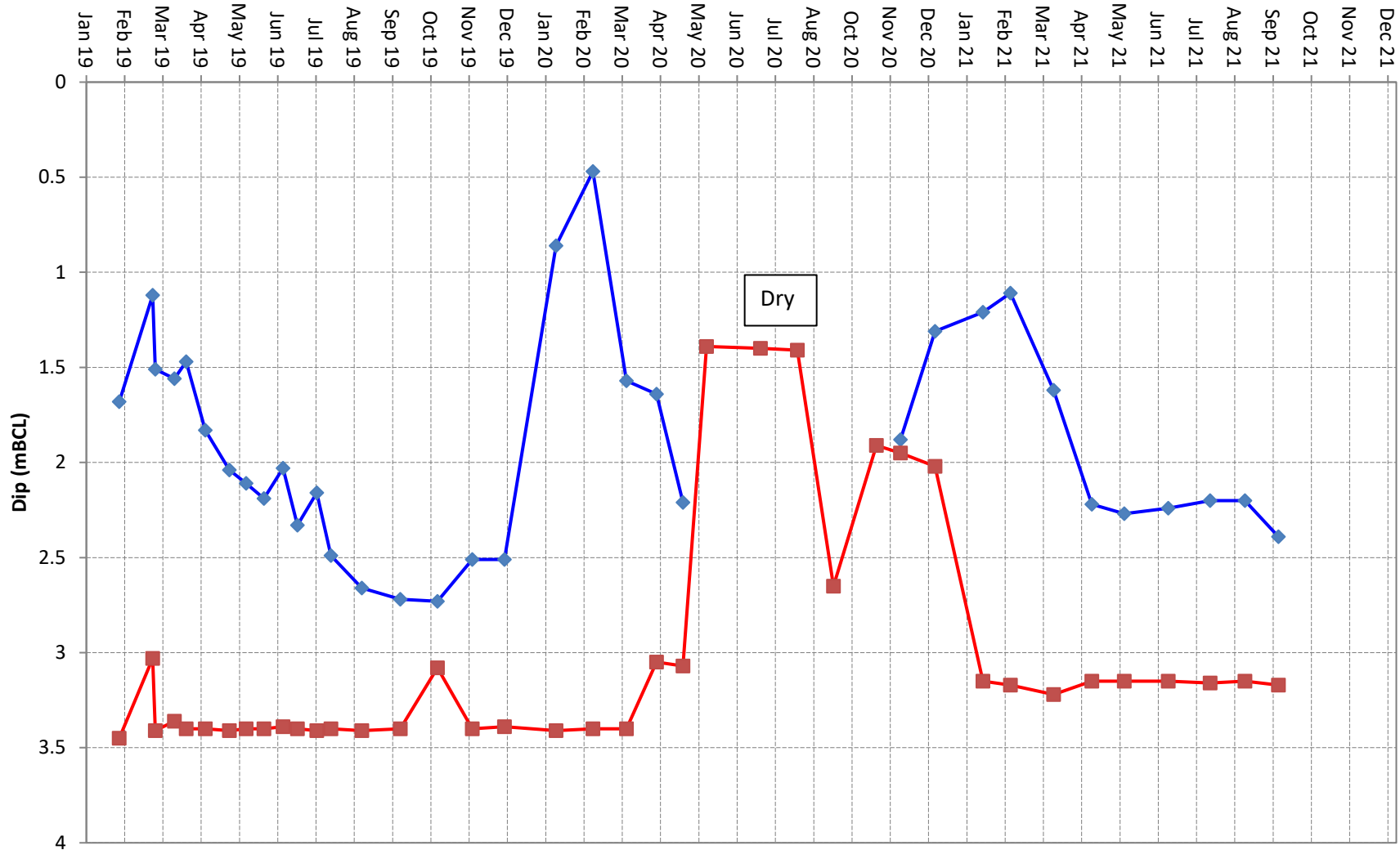


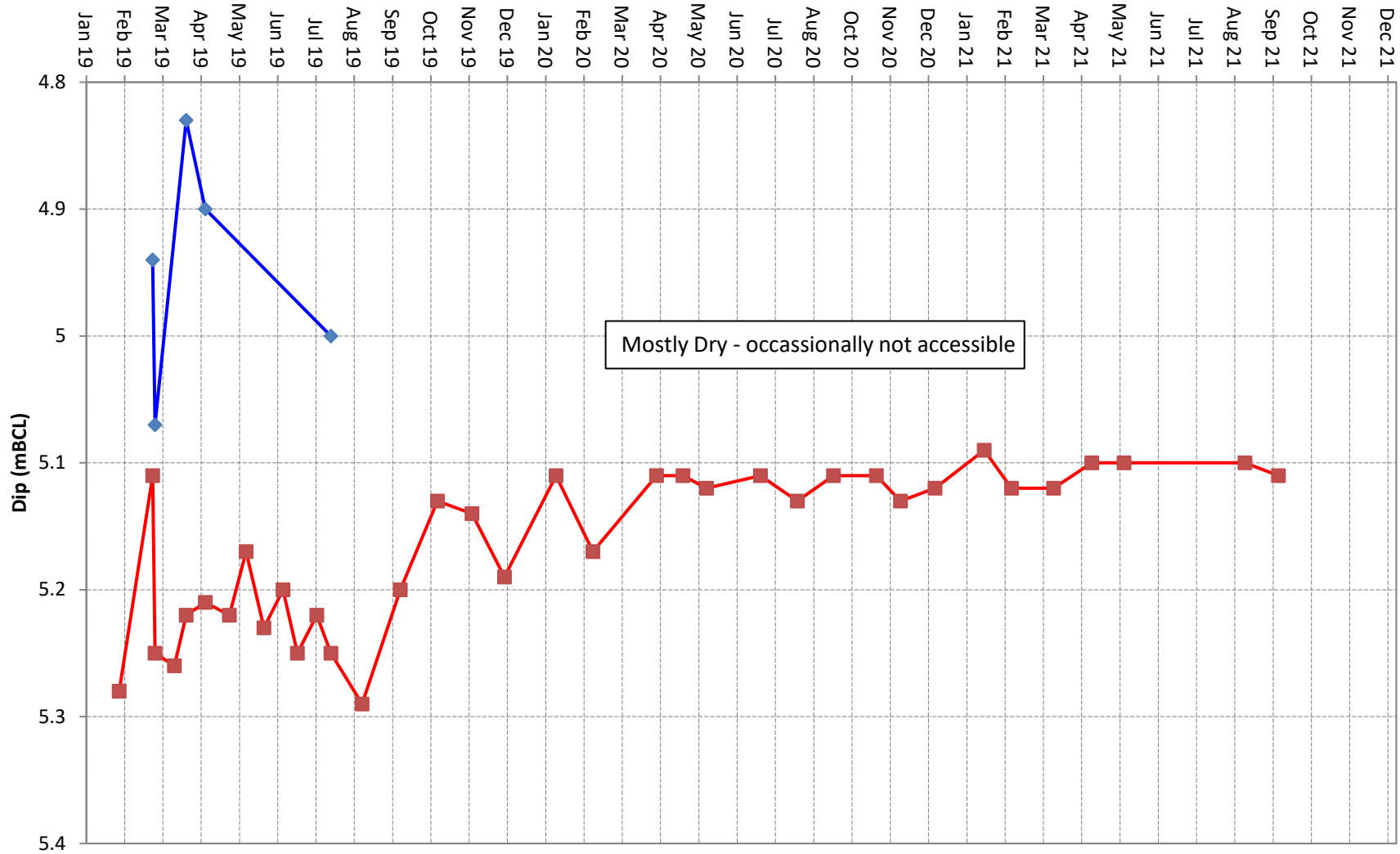
◆ water_level_Depth

■ measured_depth_of_well



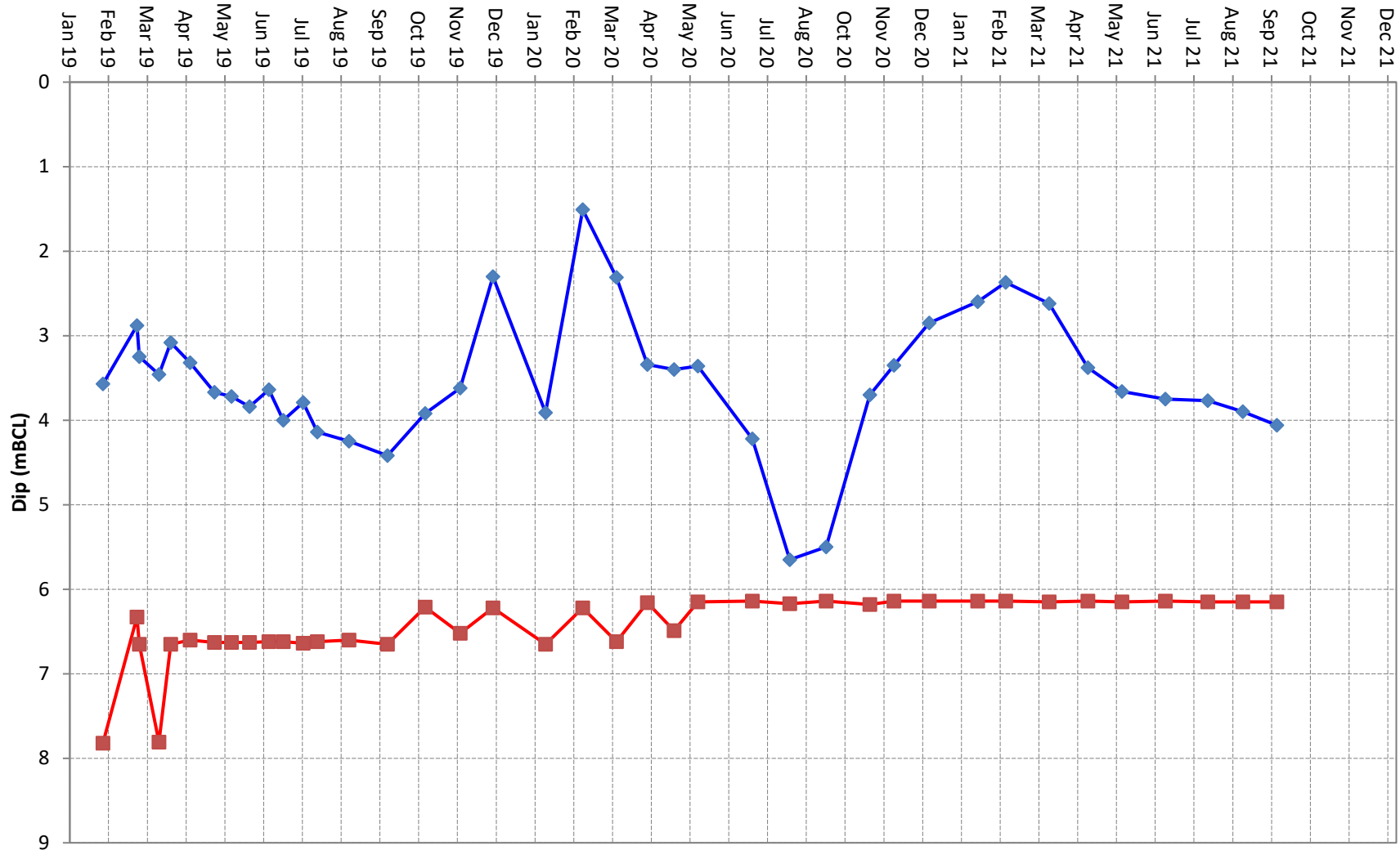
◆ water_level_Depth

■ measured_depth_of_well



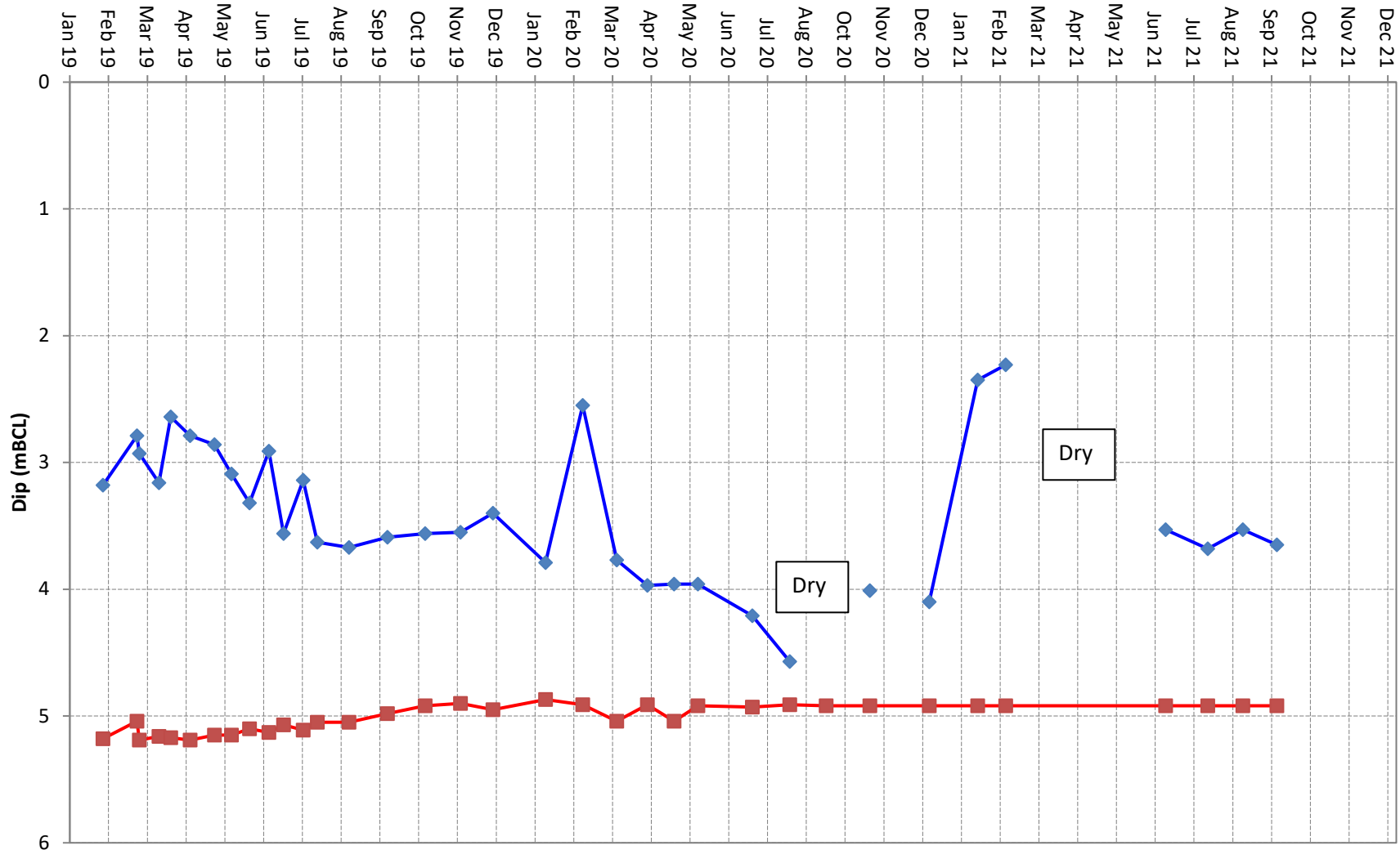
◆ water_level_Depth

■ measured_depth_of_well



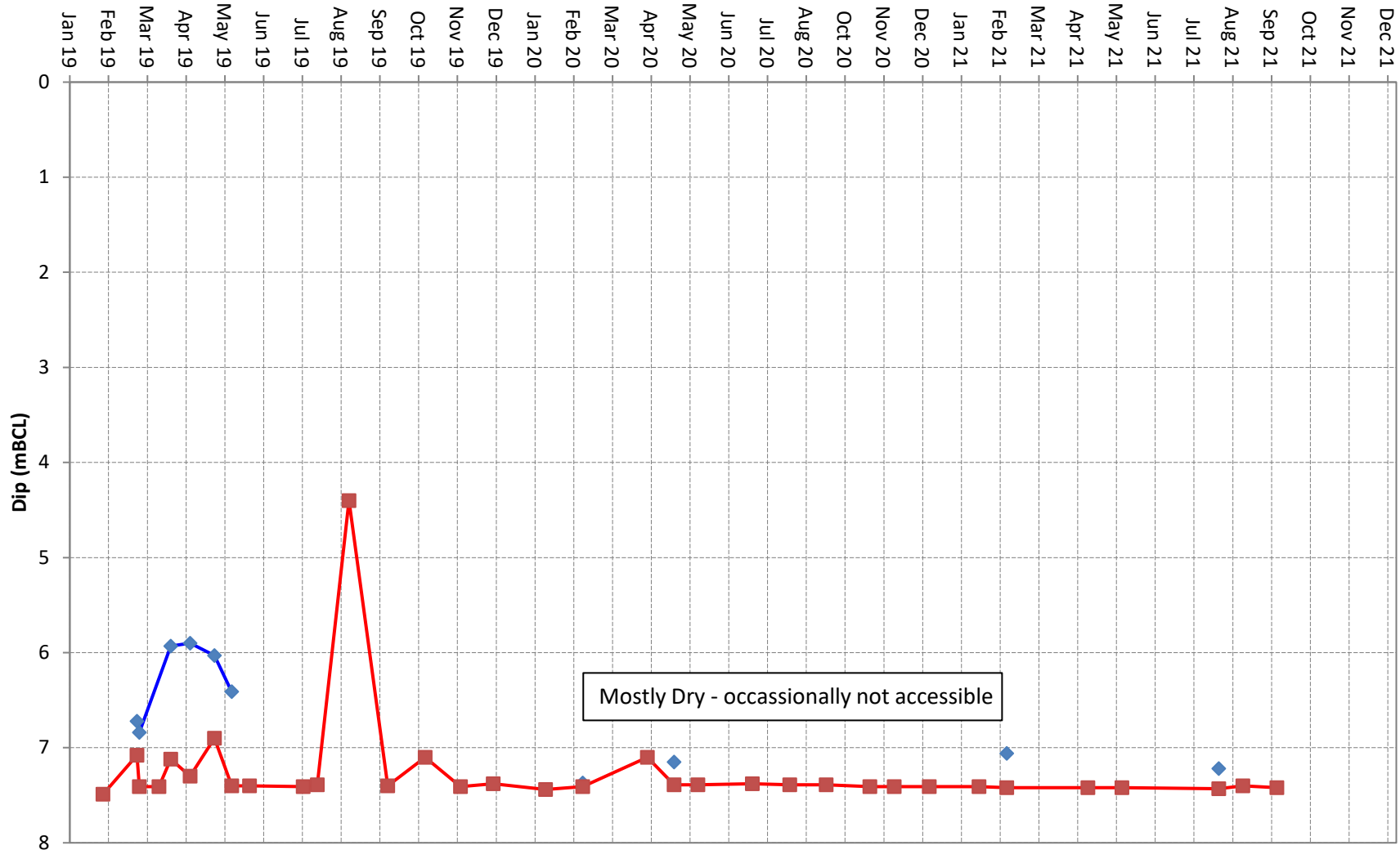
◆ water_level_Depth

■ measured_depth_of_well



◆ water_level_Depth

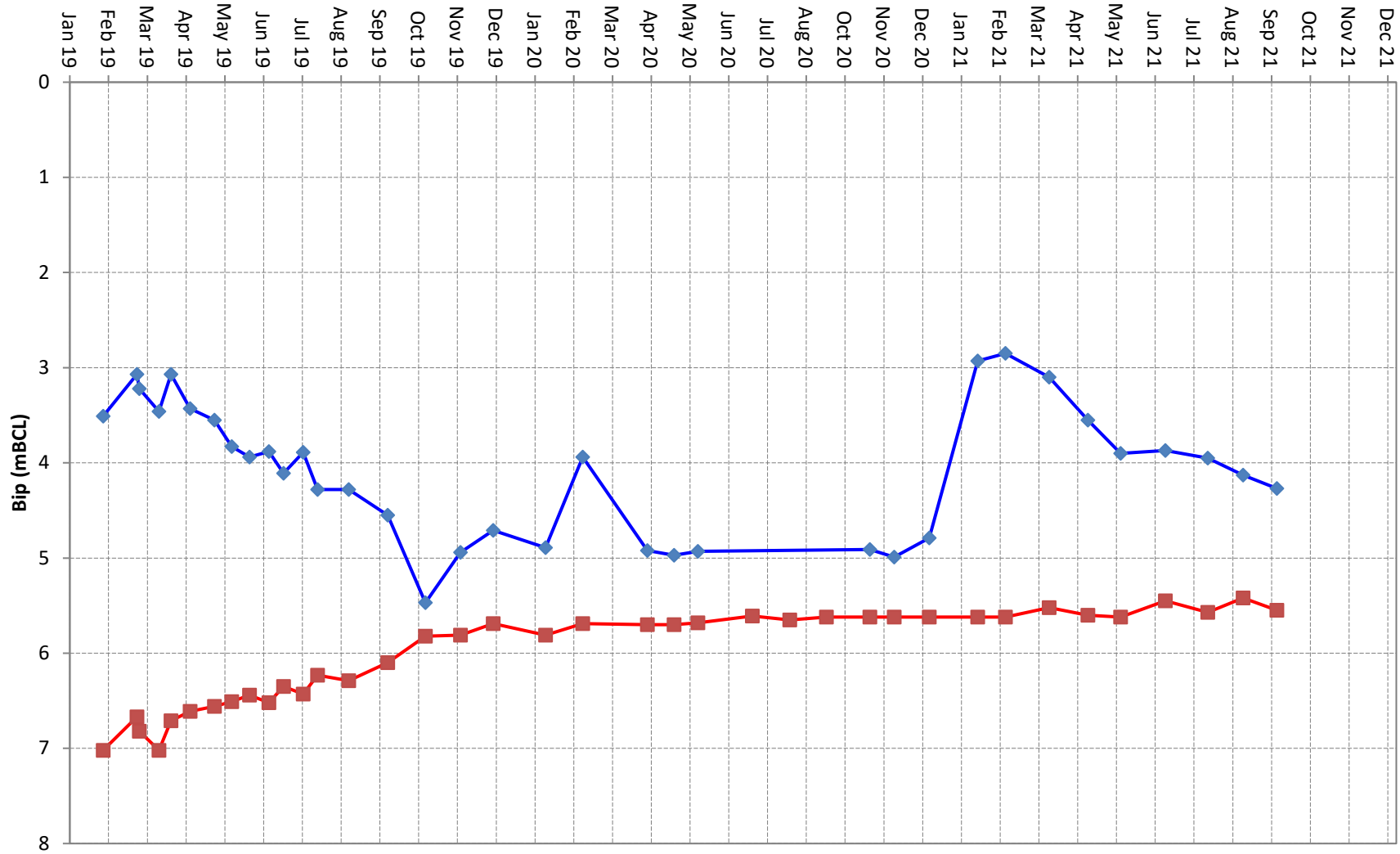
■ measured_depth_of_well



Mostly Dry - occasionally not accessible

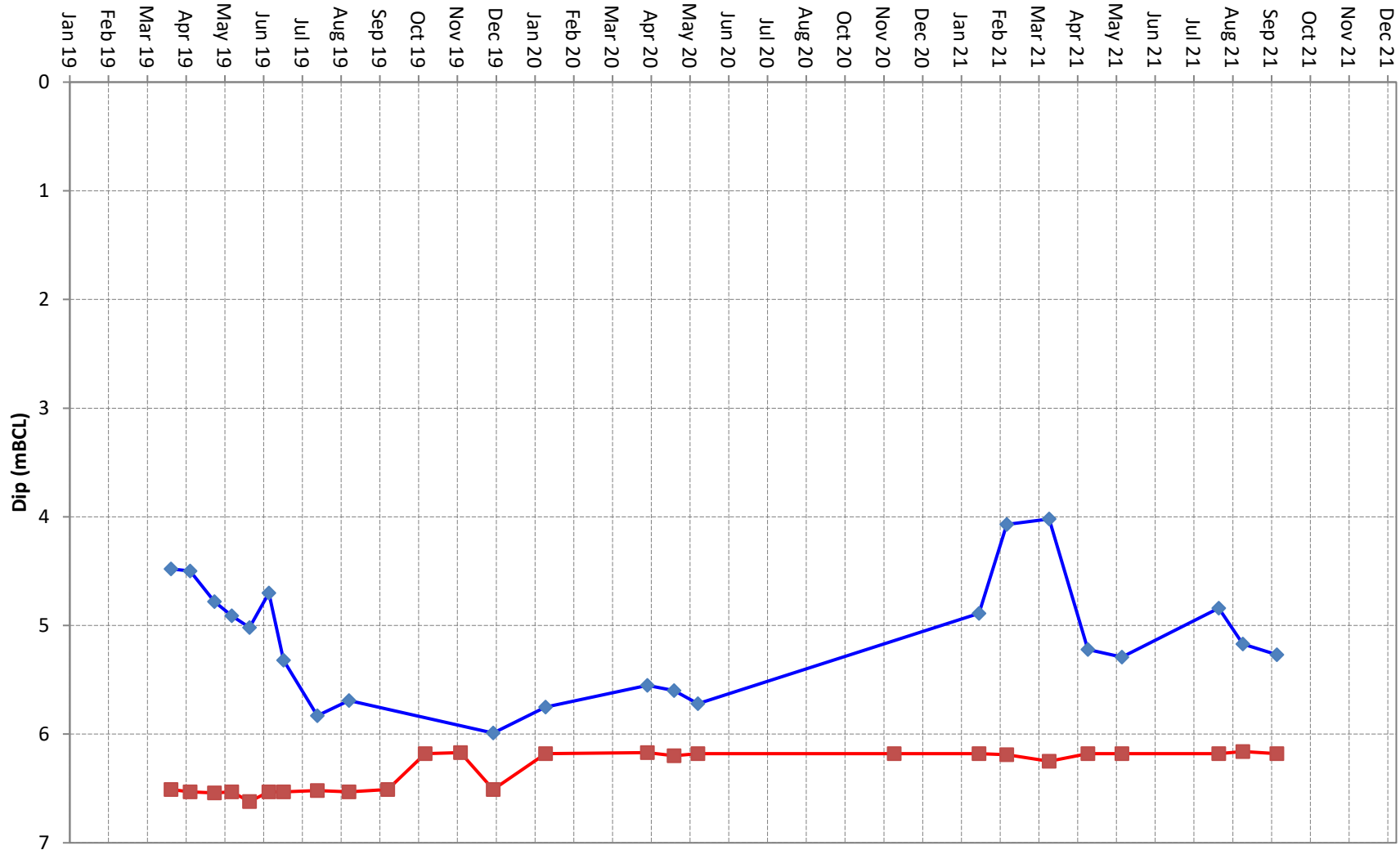
◆ water_level_Depth

■ measured_depth_of_well



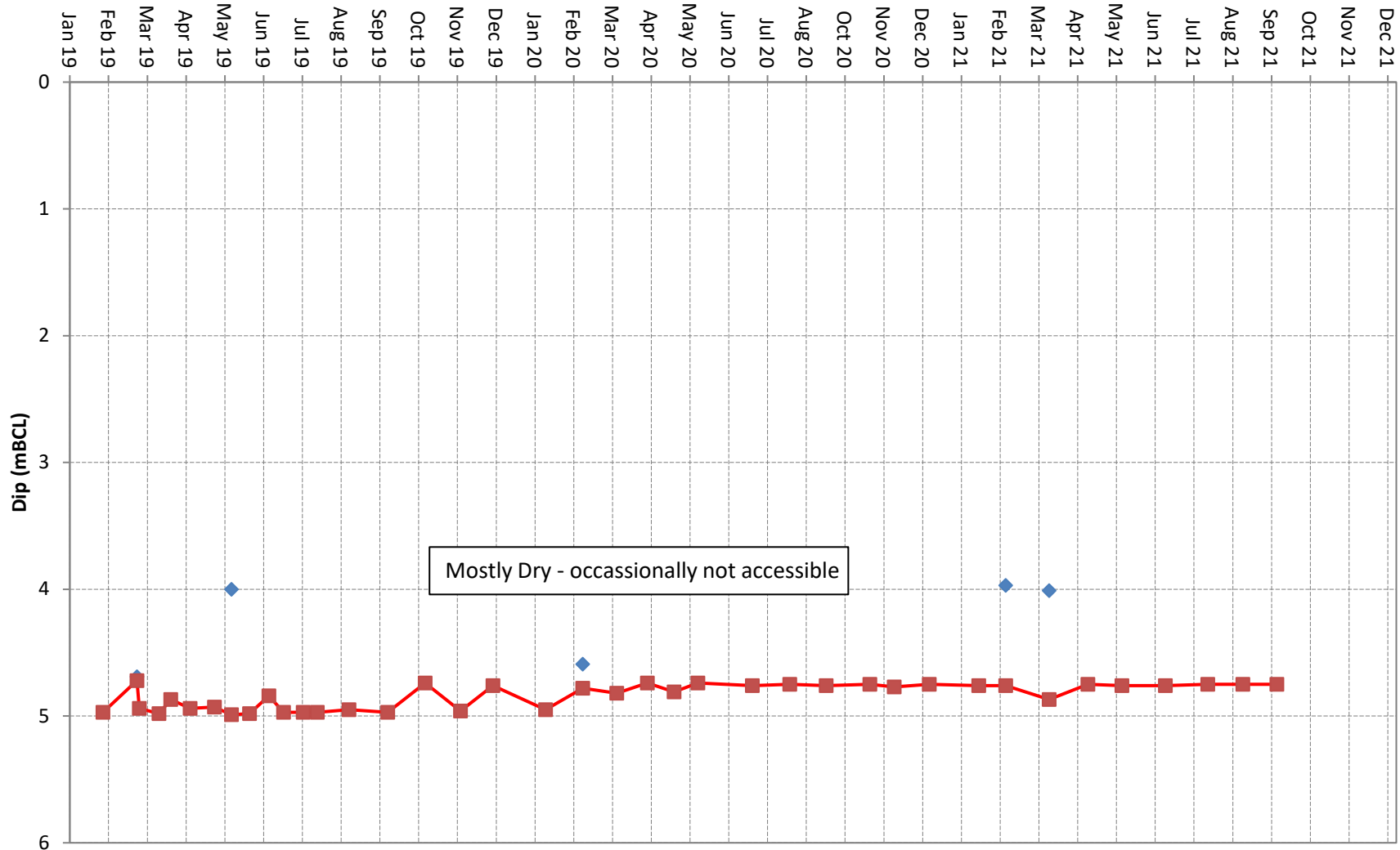
◆ water_level_Depth

■ measured_depth_of_well



◆ water_level_Depth

■ measured_depth_of_well



Mostly Dry - occasionally not accessible

◆ water_level_Depth

■ measured_depth_of_well