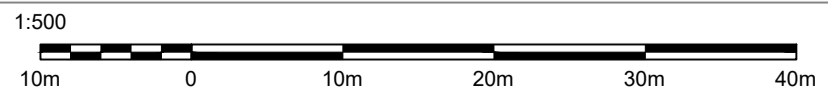
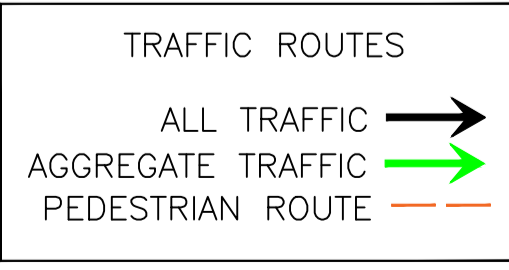
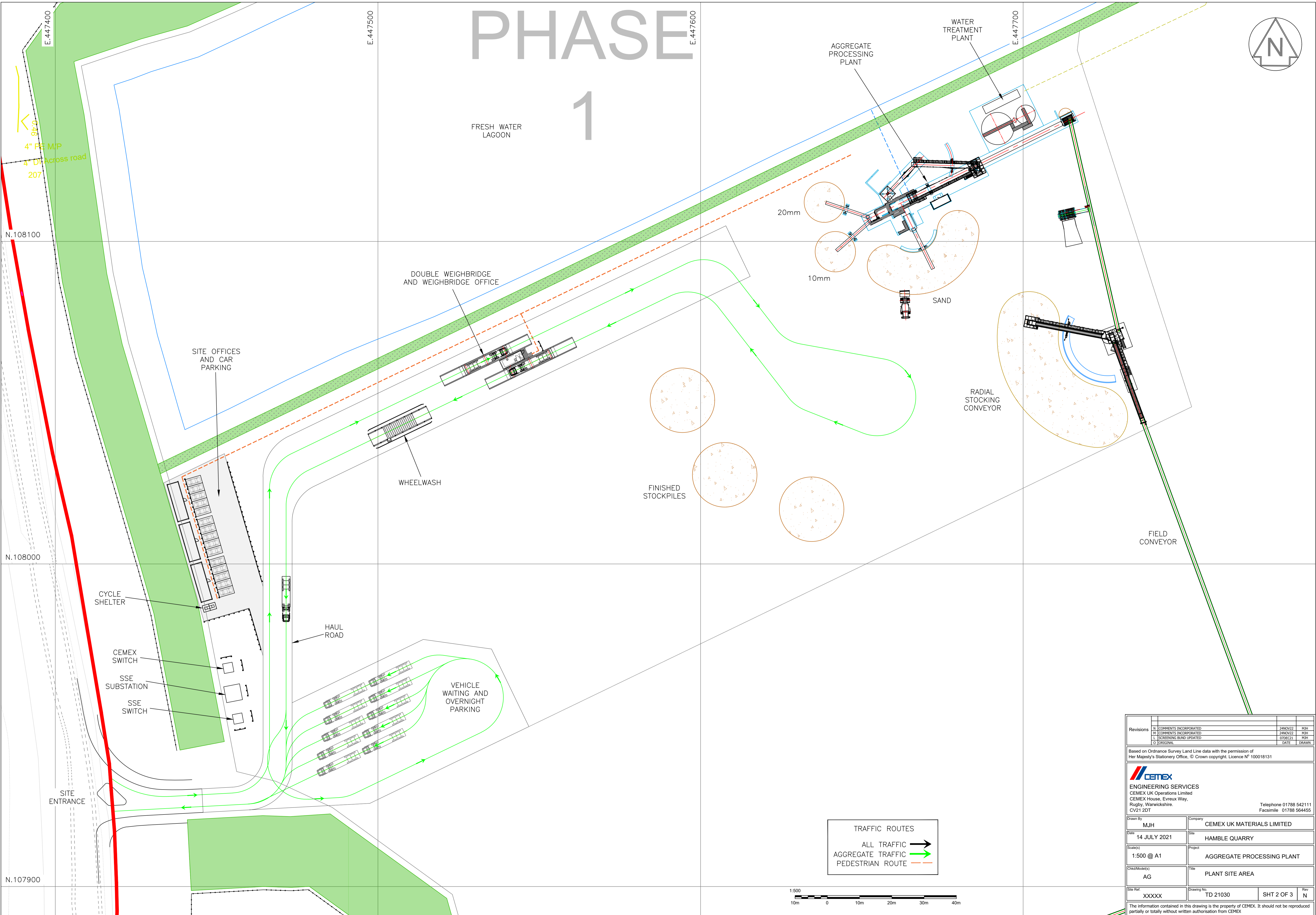
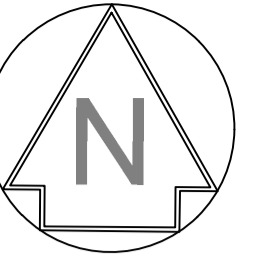


# PHASE 1



Revisions	Comments	Date	Drawn By
1	COMMENTS INCORPORATED	24NOV22	MJH
2	COMMENTS INCORPORATED	24NOV22	MJH
3	SCREENING BUND UPDATED	07DEC23	MJH
4	ORIGINAL		

Based on Ordnance Survey Land Line data with the permission of Her Majesty's Stationery Office. © Crown copyright. Licence N° 100018131

**CEMEX**  
**ENGINEERING SERVICES**  
 CEMEX UK Operations Limited  
 CEMEX House, Evreux Way,  
 Rugby, Warwickshire,  
 CV21 2DT  
 Telephone 01788 542111  
 Facsimile 01788 564455

Drawn By	MJH	Company	CEMEX UK MATERIALS LIMITED
Date	14 JULY 2021	Site	HAMBLE QUARRY
Scale(s)	1:500 @ A1	Project	AGGREGATE PROCESSING PLANT
Check/Model(s)	AG	Title	PLANT SITE AREA
Site Ref	XXXXX	Drawing No.	TD 21030
		SHT	2 OF 3
		Rev	N

The information contained in this drawing is the property of CEMEX. It should not be reproduced partially or totally without written authorisation from CEMEX