

**KEY:**

APPLICATION BOUNDARY

EXISTING VEGETATION - Trees, Scrub and Grassland

PROPOSED CONTOURS m.A.O.D (1.0m INTERVALS)

EXISTING Public Right of Way

PROPOSED PERMISSIVE PATH - grassed surface

DENOTES PLANTING WHICH CAN BE CARRIED OUT AS WORKS AT START OF OPERATIONAL PHASE

PLANT SITE

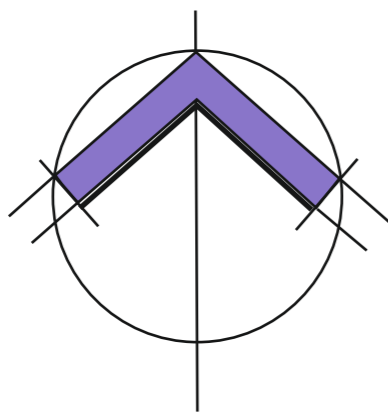
BOUNDARY SOIL STORAGE AREAS - SEEDED WITH CONSERVATION MIXES

STRIPPING AND MINERAL WORKING

OPERATIONAL LAGOON SYSTEM

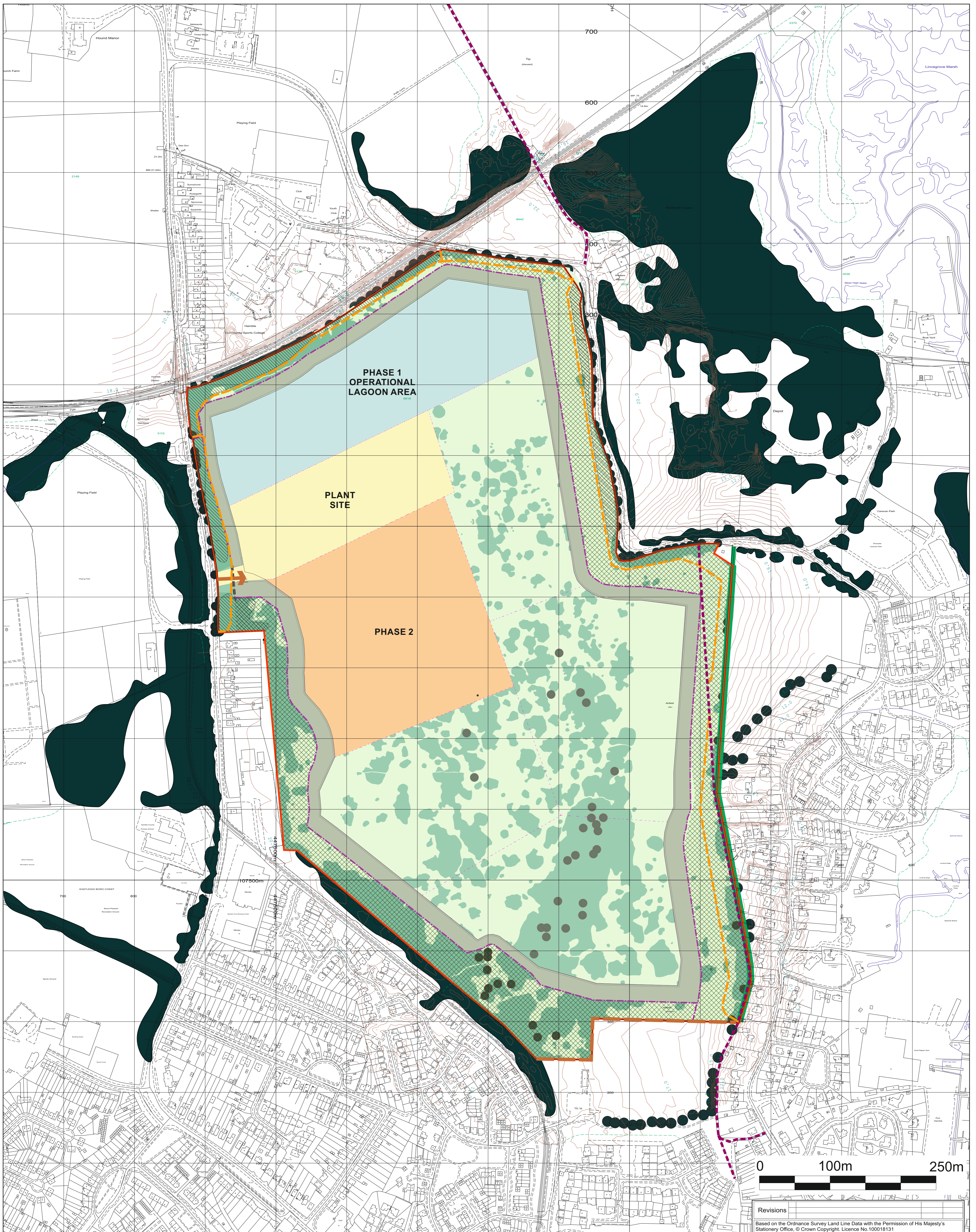
LAND UNDER RESTORATION (IMPORTATION OF RESTORATION MATERIALS)

PLACEMENT OF SOILS AND PLANTING AND SEEDING WITH APPROPRIATE MIXES



Revisions	
Based on the Ordnance Survey Land Line Data with the Permission of His Majesty's Stationery Office. © Crown Copyright. Licence No. 100018131	

Planning Department CEMEX UK Operations Limited CEMEX House, Binley Business Park, Harry Weston Road, Coventry Warwickshire CV3 2TY <a href="http://www.cemex.com">www.cemex.com</a>	
Drawn By <b>A W</b>	Company CEMEX UK Operations Limited
Date <b>7 Nov 2023</b>	Site HAMBLE AIRFIELD
Scale(s) @A1 <b>1 : 2,500</b>	Project SAND AND GRAVEL EXTRACTION
Chkd	Title AVAILABLE HABITATS PLAN (OPERATIONAL PHASES) <b>PHASE 1</b>
Site Ref.	Drawing No. <b>21-08-HAMB-1717-P1-PH-HAB Rev A</b>



**KEY :**

APPLICATION BOUNDARY

EXISTING VEGETATION - Trees, Scrub and Grassland

PROPOSED CONTOURS m.A.O.D (1.0m INTERVALS)

EXISTING Public Right of Way

PROPOSED PERMISSIVE PATH - grassed surface

DENOTES PLANTING WHICH CAN BE CARRIED OUT AS WORKS AT START OF OPERATIONAL PHASE

PLANT SITE

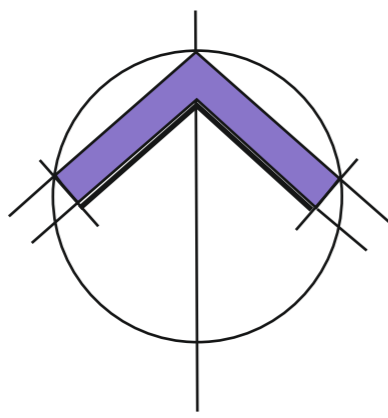
BOUNDARY SOIL STORAGE AREAS - SEEDING WITH CONSERVATION MIXES

STRIPPING AND MINERAL WORKING

OPERATIONAL LAGOON SYSTEM

LAND UNDER RESTORATION (IMPORTATION OF RESTORATION MATERIALS)

PLACEMENT OF SOILS AND PLANTING AND SEEDING WITH APPROPRIATE MIXES

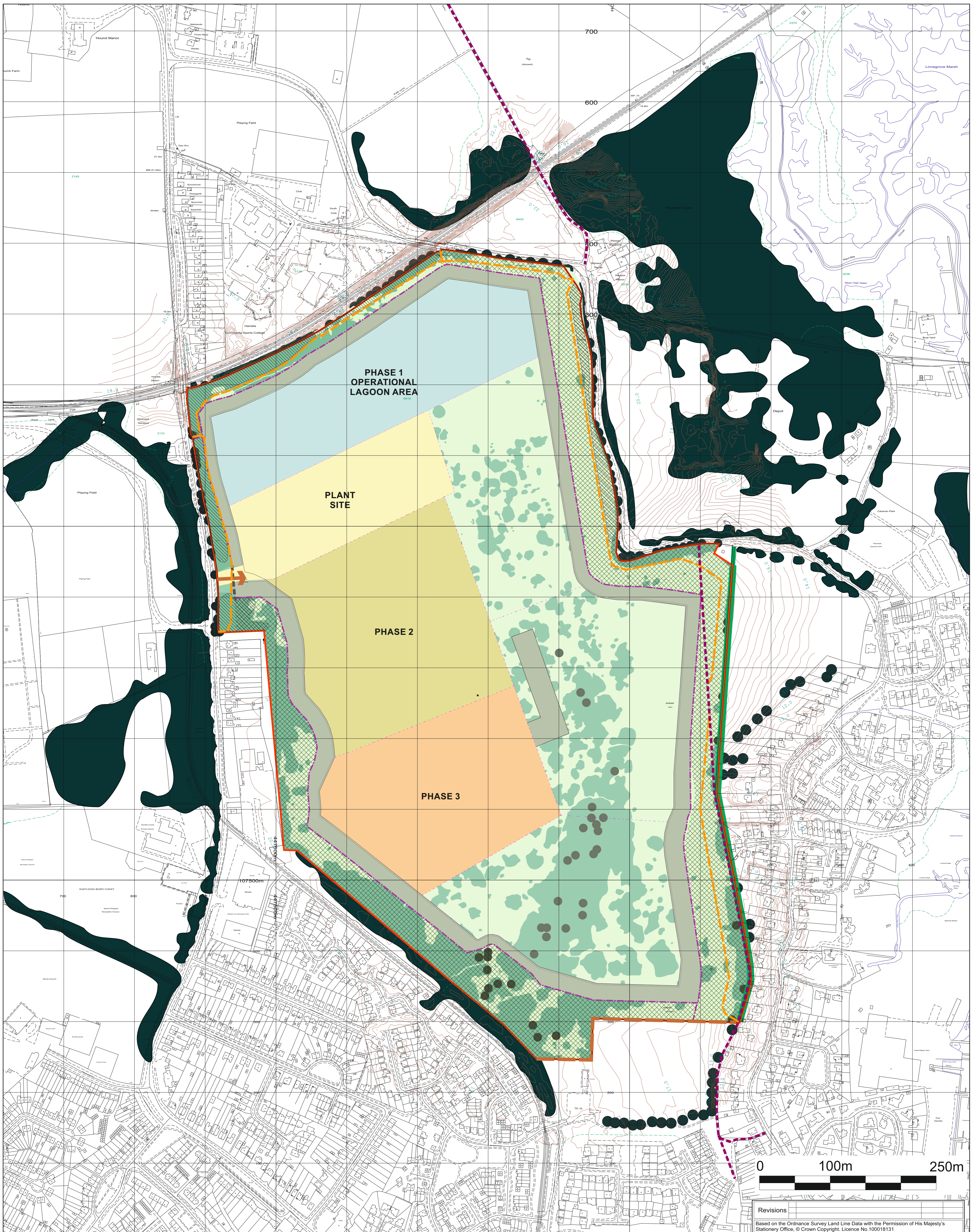


Revisions	

Based on the Ordnance Survey Land Line Data with the Permission of His Majesty's Stationery Office. © Crown Copyright. Licence No. 100018131

**CEMEX**  
 Planning Department  
 CEMEX UK Operations Limited  
 CEMEX House, Binley Business Park,  
 Harry Weston Road, Coventry  
 Warwickshire CV3 2TY [www.cemex.com](http://www.cemex.com)

Drawn By	A W	Company	CEMEX UK Operations Limited
Date	7 Nov 2023	Site	HAMBLE AIRFIELD
Scale(s) @A1	1 : 2,500	Project	SAND AND GRAVEL EXTRACTION
Chkd		Title	AVAILABLE HABITATS PLAN (OPERATIONAL PHASES) <b>PHASE 2</b>
Site Ref.		Drawing No.	21-08-HAMB-1717-P1-PH-HAB Rev A



**KEY :**

APPLICATION BOUNDARY

EXISTING VEGETATION - Trees, Scrub and Grassland

PROPOSED CONTOURS m.A.O.D (1.0m INTERVALS)

EXISTING Public Right of Way

PROPOSED PERMISSIVE PATH - grassed surface

DENOTES PLANTING WHICH CAN BE CARRIED OUT AS WORKS AT START OF OPERATIONAL PHASE

PLANT SITE

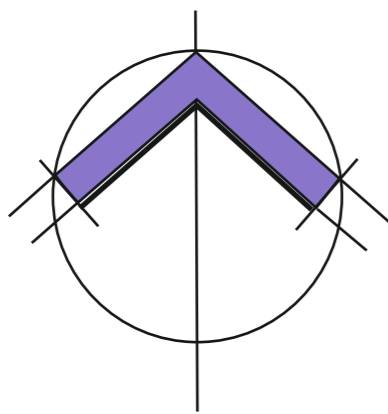
BOUNDARY SOIL STORAGE AREAS - SEEDED WITH CONSERVATION MIXES

STRIPPING AND MINERAL WORKING

OPERATIONAL LAGOON SYSTEM

LAND UNDER RESTORATION (IMPORTATION OF RESTORATION MATERIALS)

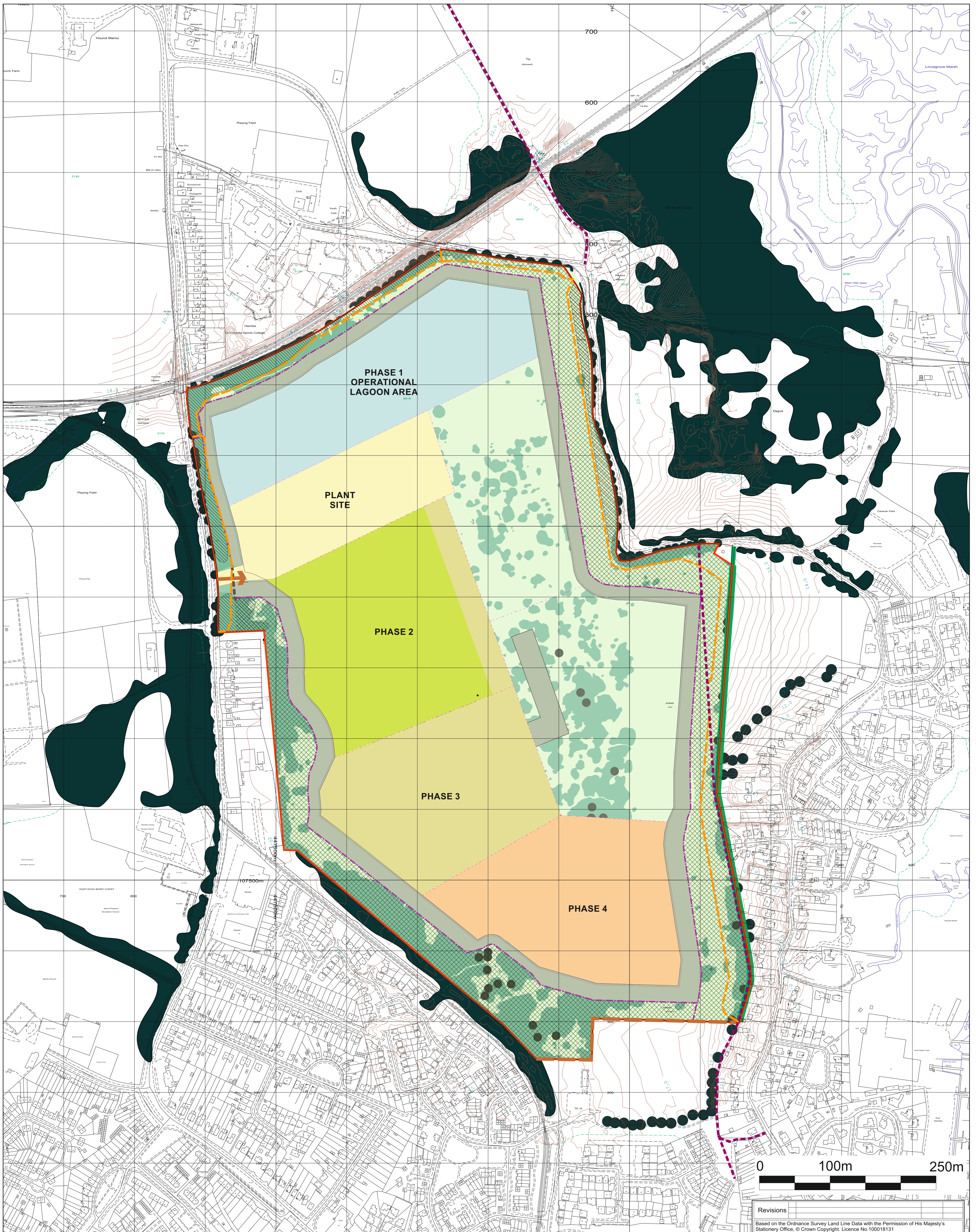
PLACEMENT OF SOILS AND PLANTING AND SEEDING WITH APPROPRIATE MIXES



Revisions	
Based on the Ordnance Survey Land Line Data with the Permission of His Majesty's Stationery Office. © Crown Copyright. Licence No. 100018131	

**CEMEX**  
 Planning Department  
 CEMEX UK Operations Limited  
 CEMEX House, Binley Business Park,  
 Harry Weston Road, Coventry  
 Warwickshire CV3 2TY www.cemex.com

Drawn By	A W	Company	CEMEX UK Operations Limited
Date	7 Nov 2023	Site	HAMBLE AIRFIELD
Scale(s) @A1	1 : 2,500	Project	SAND AND GRAVEL EXTRACTION
Chkd		Title	AVAILABLE HABITATS PLAN (OPERATIONAL PHASES) <b>PHASE 3</b>
Site Ref.		Drawing No.	21-08-HAMB-1717-P1-PH-HAB Rev A



**KEY :**

APPLICATION BOUNDARY

EXISTING VEGETATION - Trees, Scrub and Grassland

PROPOSED CONTOURS m.A.O.D (1.0m INTERVALS)

EXISTING Public Right of Way

PROPOSED PERMISSIVE PATH - grassed surface

DENOTES PLANTING WHICH CAN BE CARRIED OUT AS WORKS AT START OF OPERATIONAL PHASE

PLANT SITE

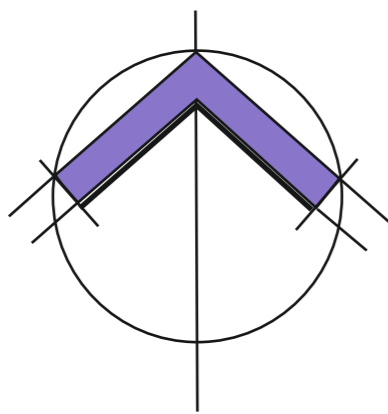
BOUNDARY SOIL STORAGE AREAS - SEEDING WITH CONSERVATION MIXES

STRIPPING AND MINERAL WORKING

OPERATIONAL LAGOON SYSTEM

LAND UNDER RESTORATION (IMPORTATION OF RESTORATION MATERIALS)

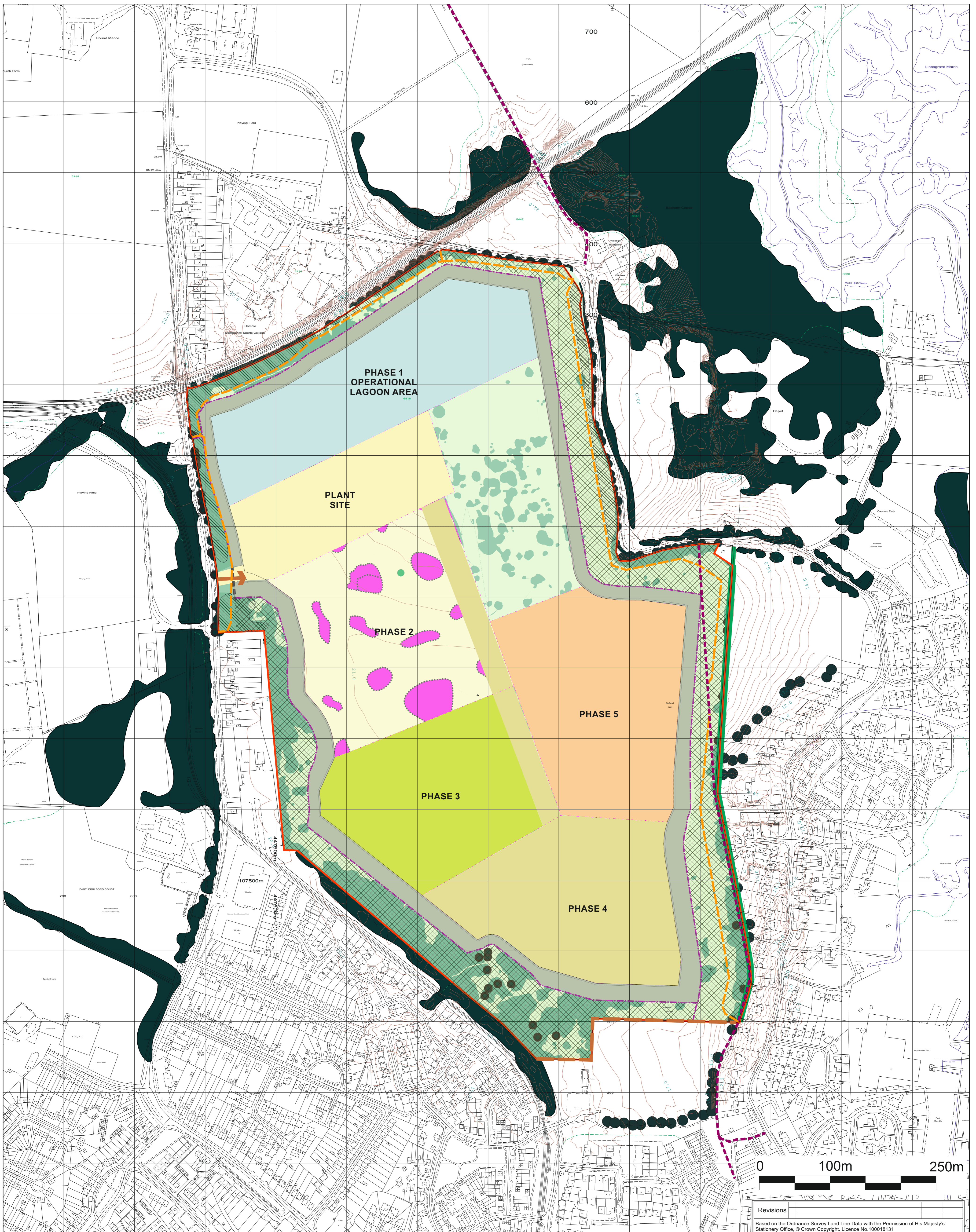
PLACEMENT OF SOILS AND PLANTING AND SEEDING WITH APPROPRIATE MIXES



Revisions	
Based on the Ordnance Survey Land Line Data with the Permission of His Majesty's Stationery Office. © Crown Copyright. Licence No. 100018131	

**CEMEX**  
 Planning Department  
 CEMEX UK Operations Limited  
 CEMEX House, Binley Business Park,  
 Harry Weston Road, Coventry  
 Warwickshire CV3 2TY www.cemex.com

Drawn By	A W	Company	CEMEX UK Operations Limited
Date	7 Nov 2023	Site	HAMBLE AIRFIELD
Scale(s) @A1	1 : 2,500	Project	SAND AND GRAVEL EXTRACTION
Chkd		Title	AVAILABLE HABITATS PLAN (OPERATIONAL PHASES) <b>PHASE 4</b>
Site Ref.		Drawing No.	21-08-HAMB-1717-P1-PH-HAB Rev A



**KEY:**

APPLICATION BOUNDARY

EXISTING VEGETATION - Trees, Scrub and Grassland

PROPOSED CONTOURS m.A.O.D (1.0m INTERVALS)

EXISTING Public Right of Way

PROPOSED PERMISSIVE PATH - grassed surface

DENOTES PLANTING WHICH CAN BE CARRIED OUT AS WORKS AT START OF OPERATIONAL PHASE

PLANT SITE

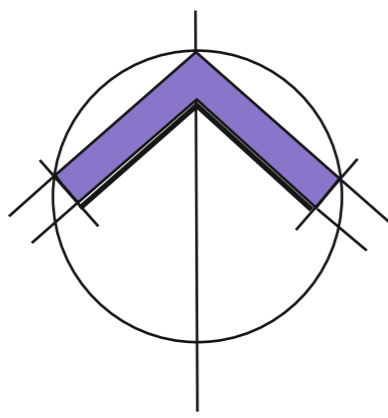
BOUNDARY SOIL STORAGE AREAS - SEEDING WITH CONSERVATION MIXES

STRIPPING AND MINERAL WORKING

OPERATIONAL LAGOON SYSTEM

LAND UNDER RESTORATION (IMPORTATION OF RESTORATION MATERIALS)

PLACEMENT OF SOILS AND PLANTING AND SEEDING WITH APPROPRIATE MIXES



Revisions	
Based on the Ordnance Survey Land Line Data with the Permission of His Majesty's Stationary Office. © Crown Copyright. Licence No. 100018131	

Planning Department CEMEX UK Operations Limited CEMEX House, Binley Business Park, Harry Weston Road, Coventry Warwickshire CV3 2TY <a href="http://www.cemex.com">www.cemex.com</a>	
Drawn By <b>A W</b>	Company CEMEX UK Operations Limited
Date <b>7 Nov 2023</b>	Site HAMBLE AIRFIELD
Scale(s) @A1 <b>1 : 2,500</b>	Project SAND AND GRAVEL EXTRACTION
Chkd	Title AVAILABLE HABITATS PLAN (OPERATIONAL PHASES) <b>PHASE 5</b>
Site Ref.	Drawing No. <b>21-08-HAMB-1717-P1-PH-HAB Rev A</b>